

# LGALS8 Rabbit Polyclonal Antibody



CAB6646

## Product Information

### Size:

20uL, 50uL, 100uL, 200uL

### Observed MW:

38kDa/50kDa

### Calculated MW:

35kDa/40kDa

### Applications:

WB, IHC, IF

### Reactivity:

Human, Mouse

## Protein Background

This gene encodes a member of the galectin family. Galectins are beta-galactoside-binding animal lectins with conserved carbohydrate recognition domains. The galectins have been implicated in many essential functions including development, differentiation, cell-cell adhesion, cell-matrix interaction, growth regulation, apoptosis, and RNA splicing. This gene is widely expressed in tumoral tissues and seems to be involved in integrin-like cell interactions. Alternatively spliced transcript variants encoding different isoforms have been identified.

## Immunogen information

### Gene ID:

3964

### Uniprot

O00214

### Synonyms:

LGALS8; Gal-8; PCTA-1; PCTA1; Po66-CBP

## Antibody Information

### Recommended dilutions:

WB 1:500 - 1:2000

IHC 1:50 - 1:200

IF 1:10 - 1:100

### Source:

Rabbit

### Isotype:

IgG

### Purification:

Affinity purification

### Immunogen:

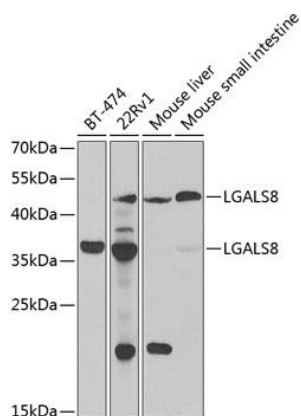
Recombinant fusion protein containing a sequence corresponding to amino acids 20-317 of human LGALS8 (NP\_963838.1).

### Storage:

Store at -20°C. Avoid freeze / thaw cycles.

Buffer: PBS with 0.02% sodium azide, 50% glycerol, pH7.3.

## Product Images



Western blot analysis of extracts of various cell lines, using LGALS8 antibody (CAB6646) at 1:1000 dilution.

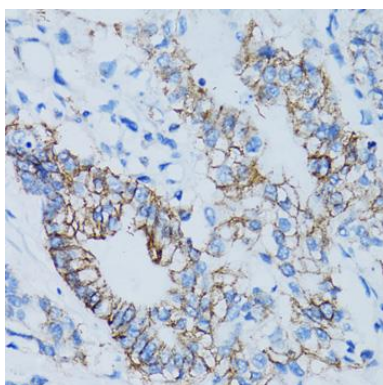
Secondary antibody: HRP Goat Anti-Rabbit IgG (H+L) (CABS014) at 1:10000 dilution.

Lysates/proteins: 25ug per lane.

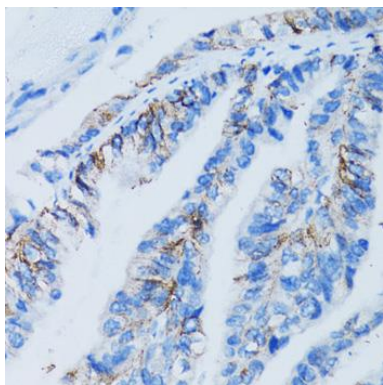
Blocking buffer: 3% non-fat dry milk in TBST.

Detection: ECL Basic Kit (AbGn00020).

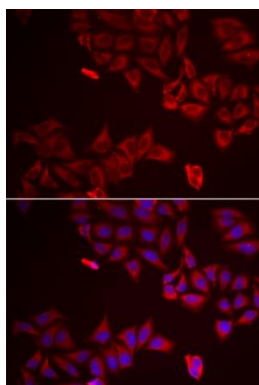
Exposure time: 90s.



Immunohistochemistry of paraffin-embedded human colon carcinoma using LGALS8 antibody (CAB6646) at dilution of 1:100 (40x lens).



Immunohistochemistry of paraffin-embedded human gastric cancer using LGALS8 antibody (CAB6646) at dilution of 1:100 (40x lens).



Immunofluorescence analysis of A549 cells using LGALS8 antibody (CAB6646).

Blue: DAPI for nuclear staining.