

# MLPH Rabbit Polyclonal Antibody



CAB6656

## Product Information

### Size:

20uL, 50uL, 100uL, 200uL

### Observed MW:

75kDa

### Calculated MW:

50kDa/52kDa/60kDa/62kDa/  
65kDa

### Applications:

WB IHC IF

### Reactivity:

Human, Mouse, Rat

## Antibody Information

### Recommended dilutions:

WB 1:500 - 1:2000 IHC 1:50  
- 1:200 IF 1:50 - 1:200

### Source:

Rabbit

### Isotype:

IgG

### Purification:

Affinity purification

## Protein Background

This gene encodes a member of the exophilin subfamily of Rab effector proteins. The protein forms a ternary complex with the small Ras-related GTPase Rab27A in its GTP-bound form and the motor protein myosin Va. A similar protein complex in mouse functions to tether pigment-producing organelles called melanosomes to the actin cytoskeleton in melanocytes, and is required for visible pigmentation in the hair and skin. A mutation in this gene results in Griscelli syndrome type 3, which is characterized by a silver-gray hair color and abnormal pigment distribution in the hair shaft. Several alternatively spliced transcript variants encoding different isoforms have been found for this gene.

## Immunogen information

### Gene ID:

79083

### Uniprot

Q9BV36

### Synonyms:

MLPH; SLAC2-A

### Immunogen:

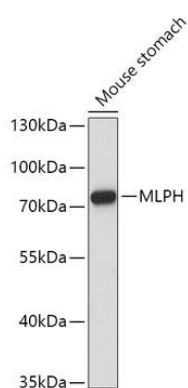
Recombinant fusion protein containing a sequence corresponding to amino acids 301-600 of human MLPH (NP\_077006.1).

### Storage:

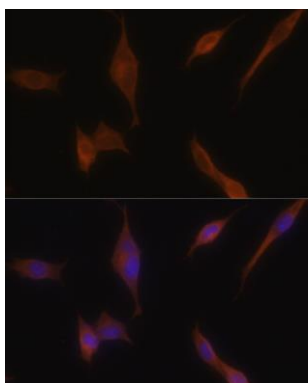
Store at -20°C. Avoid freeze / thaw cycles. Buffer: PBS with 0.02% sodium azide, 50% glycerol, pH7.3.

## Product Images

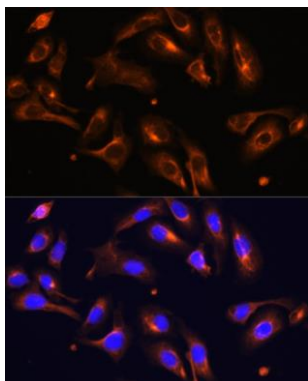
---



Western blot analysis of extracts of Mouse stomach, using MLPH antibody (CAB6656) at 1:1000 dilution. Secondary antibody: HRP Goat Anti-Rabbit IgG (H+L) (CABS014) at 1:10000 dilution. Lysates/proteins: 25ug per lane. Blocking buffer: 3% nonfat dry milk in TBST. Detection: ECL Basic Kit (CABM00020). Exposure time: 180s.



Immunofluorescence analysis of NIH-3T3 cells using MLPH antibody (CAB6656) at dilution of 1:100. Blue: DAPI for nuclear staining.



Immunofluorescence analysis of U-2 OS cells using MLPH antibody (CAB6656) at dilution of 1:100. Blue: DAPI for nuclear staining.