

MMRN1 Rabbit Polyclonal Antibody



CAB6658

Product Information

Size:

20uL, 50uL, 100uL, 200uL

Observed MW:

180kDa

Calculated MW:

58kDa/138kDa

Applications:

WB IHC IF

Reactivity:

Human, Mouse

Protein Background

Multimerin is a massive, soluble protein found in platelets and in the endothelium of blood vessels. It is comprised of subunits linked by interchain disulfide bonds to form large, variably sized homomultimers. Multimerin is a factor V/Va-binding protein and may function as a carrier protein for platelet factor V. It may also have functions as an extracellular matrix or adhesive protein. Recently, patients with an unusual autosomal-dominant bleeding disorder (factor V Quebec) were found to have a deficiency of platelet multimerin.

Immunogen information

Gene ID:

22915

Uniprot

Q13201

Synonyms:

MMRN1; ECM; EMILIN4; GPIa*; MMRN

Antibody Information

Recommended dilutions:

WB 1:500 - 1:2000 IHC 1:50
- 1:100 IF 1:50 - 1:100

Source:

Rabbit

Isotype:

IgG

Purification:

Affinity purification

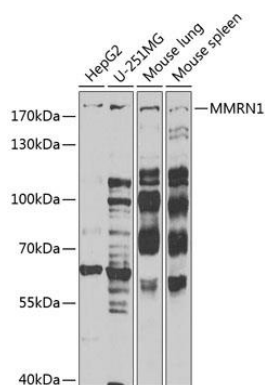
Immunogen:

Recombinant fusion protein containing a sequence corresponding to amino acids 949-1228 of human MMRN1 (NP_031377.2).

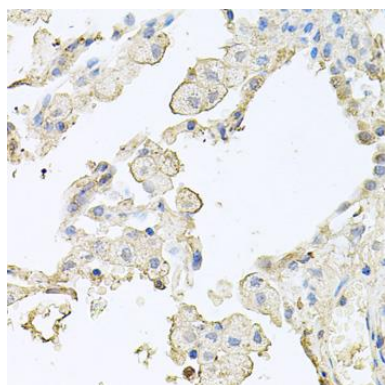
Storage:

Store at -20°C. Avoid freeze / thaw cycles. Buffer: PBS with 0.02% sodium azide, 50% glycerol, pH7.3.

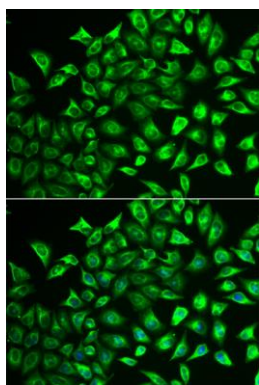
Product Images



Western blot analysis of extracts of various cell lines, using MMRN1 Antibody (CAB6658) at 1:1000 dilution. Secondary antibody: HRP Goat Anti-Rabbit IgG (H+L) (CABS014) at 1:10000 dilution. Lysates/proteins: 25ug per lane. Blocking buffer: 3% nonfat dry milk in TBST. Detection: ECL Basic Kit (CABM00020). Exposure time: 60s.



Immunohistochemistry of paraffin-embedded human lung using MMRN1 antibody (CAB6658) at dilution of 1:100 (40x lens).



Immunofluorescence analysis of U2OS cells using MMRN1 antibody (CAB6658). Blue: DAPI for nuclear staining.