

# MYLK3 Rabbit Polyclonal Antibody



CAB6663

---

## Product Information

### Size:

20uL, 50uL, 100uL, 200uL

### Observed MW:

Refer to Figures

### Calculated MW:

52kDa/88kDa

### Applications:

WB IF

### Reactivity:

Human, Mouse

## Antibody Information

### Recommended dilutions:

WB 1:500 - 1:2000 IF 1:50 - 1:100

### Source:

Rabbit

### Isotype:

IgG

### Purification:

Affinity purification

## Protein Background

### Immunogen information

#### Gene ID:

91807

#### Uniprot

Q32MK0

#### Synonyms:

MYLK3; MLCK; MLCK2; caMLCK

#### Immunogen:

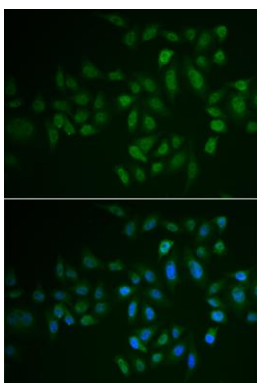
Recombinant fusion protein containing a sequence corresponding to amino acids 1-240 of human MYLK3 (NP\_872299.2).

#### Storage:

Store at -20°C. Avoid freeze / thaw cycles. Buffer: PBS with 0.02% sodium azide, 50% glycerol, pH7.3.

## Product Images

---



Immunofluorescence analysis of U2OS cells using MYLK3 antibody (CAB6663). Blue: DAPI for nuclear staining.