

NFATC3 Rabbit Polyclonal Antibody



CAB6666

Product Information

Size:

20uL, 50uL, 100uL, 200uL

Observed MW:

150kDa

Calculated MW:

77kDa/80kDa/112kDa/115kDa

a

Applications:

WB IHC IF

Reactivity:

Human, Mouse, Rat

Antibody Information

Recommended dilutions:

WB 1:500 - 1:2000 IHC 1:50
- 1:200 IF 1:50 - 1:200

Source:

Rabbit

Isotype:

IgG

Purification:

Affinity purification

Protein Background

The product of this gene is a member of the nuclear factors of activated T cells DNA-binding transcription complex. This complex consists of at least two components: a preexisting cytosolic component that translocates to the nucleus upon T cell receptor (TCR) stimulation and an inducible nuclear component. Other members of this family participate to form this complex also. The product of this gene plays a role in the regulation of gene expression in T cells and immature thymocytes. Several transcript variants encoding distinct isoforms have been identified for this gene.

Immunogen information

Gene ID:

4775

Uniprot

Q12968

Synonyms:

NFATC3; NFAT4; NFATX

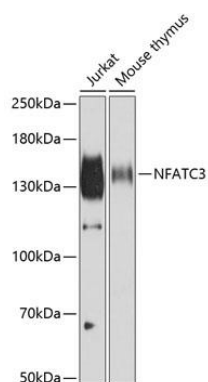
Immunogen:

Recombinant fusion protein containing a sequence corresponding to amino acids 1-290 of human NFATC3 (NP_775188.1).

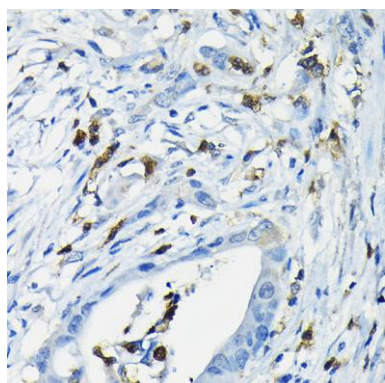
Storage:

Store at -20°C. Avoid freeze / thaw cycles. Buffer: PBS with 0.02% sodium azide, 50% glycerol, pH7.3.

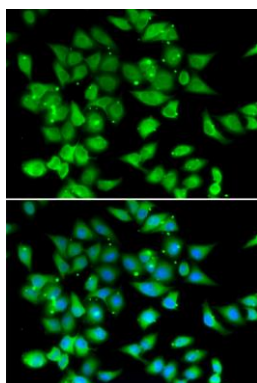
Product Images



Western blot analysis of extracts of various cell lines, using NFATC3 antibody (CAB6666) at 1:500 dilution. Secondary antibody: HRP Goat Anti-Rabbit IgG (H+L) (CABS014) at 1:10000 dilution. Lysates/proteins: 25ug per lane. Blocking buffer: 3% nonfat dry milk in TBST. Detection: ECL Basic Kit (CABM00020). Exposure time: 10s.



Immunohistochemistry of paraffin-embedded human colon carcinoma using NFATC3 Rabbit pAb (CAB6666) at dilution of 1:200 (40x lens).



Immunofluorescence analysis of HeLa cells using NFATC3 antibody (CAB6666). Blue: DAPI for nuclear staining.