

NHLRC1 Rabbit Polyclonal Antibody



CAB6669

Product Information

Size:

20uL, 50uL, 100uL, 200uL

Observed MW:

42kDa

Calculated MW:

42kDa

Applications:

WB IHC IF

Reactivity:

Human, Mouse, Rat

Protein Background

The protein encoded by this gene is a single subunit E3 ubiquitin ligase. Laforin is polyubiquitinated by the encoded protein. Defects in this intronless gene lead to an accumulation of laforin and onset of Lafora disease, also known as progressive myoclonic epilepsy type 2 (EPM2).

Immunogen information

Gene ID:

378884

Uniprot

Q6VVB1

Synonyms:

NHLRC1; EPM2A; EPM2B; MALIN; bA204B7.2

Antibody Information

Recommended dilutions:

WB 1:500 - 1:2000 IHC 1:50
- 1:200 IF 1:50 - 1:200

Source:

Rabbit

Isotype:

IgG

Purification:

Affinity purification

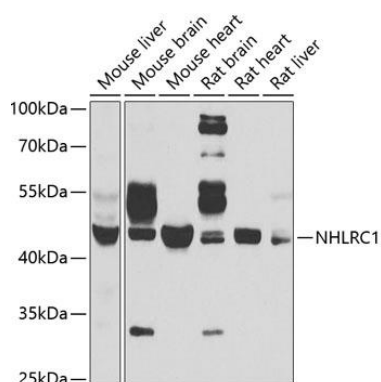
Immunogen:

Recombinant fusion protein containing a sequence corresponding to amino acids 1-280 of human NHLRC1 (NP_940988.2).

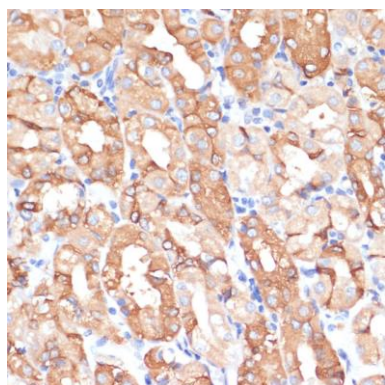
Storage:

Store at -20°C. Avoid freeze / thaw cycles. Buffer: PBS with 0.02% sodium azide, 50% glycerol, pH7.3.

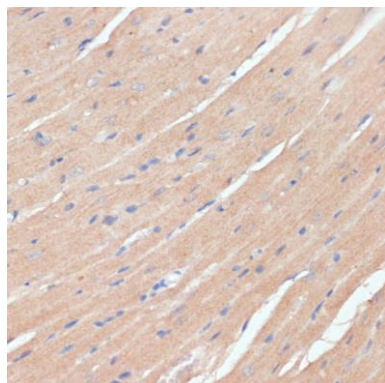
Product Images



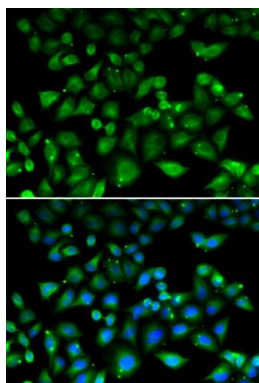
Western blot analysis of extracts of various cell lines, using NHLRC1 antibody (CAB6669) at 1:1000 dilution. Secondary antibody: HRP Goat Anti-Rabbit IgG (H+L) (CABS014) at 1:10000 dilution. Lysates/proteins: 25ug per lane. Blocking buffer: 3% nonfat dry milk in TBST. Detection: ECL Basic Kit (CABM00020). Exposure time: 30s.



Immunohistochemistry of paraffin-embedded human stomach using NHLRC1 antibody (CAB6669) at dilution of 1:100 (40x lens).



Immunohistochemistry of paraffin-embedded mouse heart using NHLRC1 antibody (CAB6669) at dilution of 1:100 (40x lens).



Immunofluorescence analysis of HeLa cells using NHLRC1 antibody (CAB6669). Blue: DAPI for nuclear staining.