

# NUDC Rabbit Polyclonal Antibody



**CAB6678**

---

## Product Information

### Size:

20uL, 50uL, 100uL, 200uL

### Observed MW:

45kDa

### Calculated MW:

38kDa

### Applications:

WB IHC IF

### Reactivity:

Human, Mouse, Rat

## Protein Background

This gene encodes a nuclear distribution protein that plays an essential role in mitosis and cytokinesis. The encoded protein is involved in spindle formation during mitosis and in microtubule organization during cytokinesis. Pseudogenes of this gene are found on chromosome 2.

## Immunogen information

### Gene ID:

10726

### Uniprot

Q9Y266

### Synonyms:

NUDC; HNUDC; MNUDC; NPD011

## Antibody Information

### Recommended dilutions:

WB 1:500 - 1:2000 IHC 1:50  
- 1:200 IF 1:50 - 1:200

### Source:

Rabbit

### Isotype:

IgG

### Purification:

Affinity purification

### Immunogen:

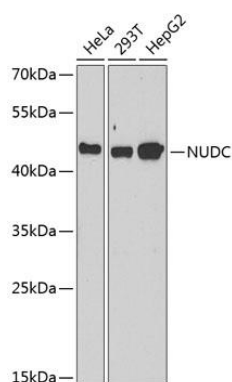
Recombinant fusion protein containing a sequence corresponding to amino acids 1-331 of human NUDC (NP\_006591.1).

### Storage:

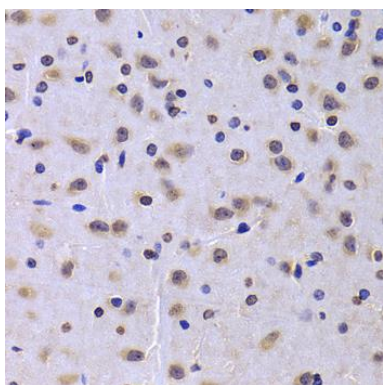
Store at -20°C. Avoid freeze / thaw cycles. Buffer: PBS with 0.02% sodium azide, 50% glycerol, pH7.3.

## Product Images

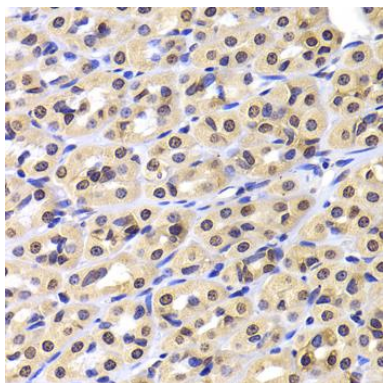
---



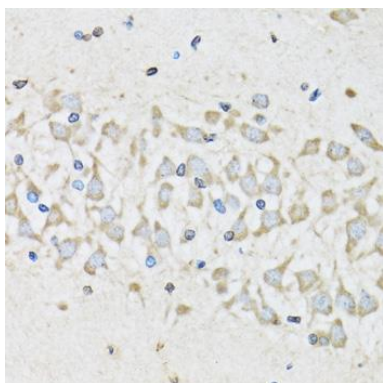
Western blot analysis of extracts of various cell lines, using NUDC antibody (CAB6678) at 1:1000 dilution. Secondary antibody: HRP Goat Anti-Rabbit IgG (H+L) (CABS014) at 1:10000 dilution. Lysates/proteins: 25ug per lane. Blocking buffer: 3% nonfat dry milk in TBST. Detection: ECL Basic Kit (CABM00020). Exposure time: 90s.



Immunohistochemistry of paraffin-embedded rat brain using NUDC antibody (CAB6678) at dilution of 1:100 (40x lens).



Immunohistochemistry of paraffin-embedded rat stomach using NUDC antibody (CAB6678) at dilution of 1:100 (40x lens).



Immunohistochemistry of paraffin-embedded mouse brain using NUDC antibody (CAB6678) at dilution of 1:100 (40x lens).