

PCMT1 Rabbit Polyclonal Antibody



CAB6684

Product Information

Size:

20uL, 50uL, 100uL, 200uL

Observed MW:

25kDa

Calculated MW:

24kDa

Applications:

WB IF IP

Reactivity:

Human, Mouse, Rat

Protein Background

This gene encodes a member of the type II class of protein carboxyl methyltransferase enzymes. The encoded enzyme plays a role in protein repair by recognizing and converting D-aspartyl and L-isoaspartyl residues resulting from spontaneous deamidation back to the normal L-aspartyl form. The encoded protein may play a protective role in the pathogenesis of Alzheimer's disease, and single nucleotide polymorphisms in this gene have been associated with spina bifida and premature ovarian failure. Alternatively spliced transcript variants encoding multiple isoforms have been observed for this gene.

Immunogen information

Gene ID:

5110

Uniprot

P22061

Synonyms:

PCMT1; PIMT

Antibody Information

Recommended dilutions:

WB 1:500 - 1:2000 IF 1:50 - 1:100 IP 1:50 - 1:200

Source:

Rabbit

Isotype:

IgG

Purification:

Affinity purification

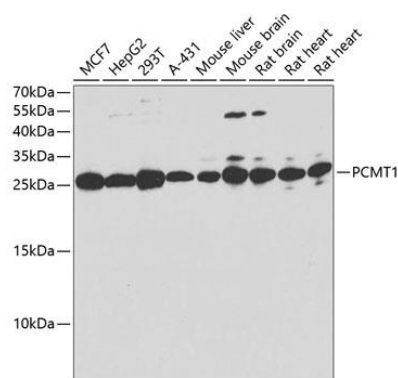
Immunogen:

Recombinant fusion protein containing a sequence corresponding to amino acids 62-286 of human PCMT1 (NP_001238978.1).

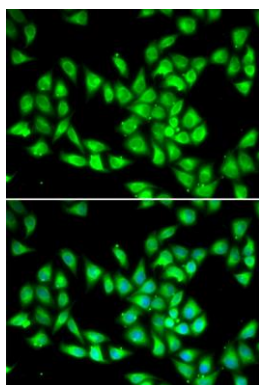
Storage:

Store at -20°C. Avoid freeze / thaw cycles. Buffer: PBS with 0.02% sodium azide, 50% glycerol, pH7.3.

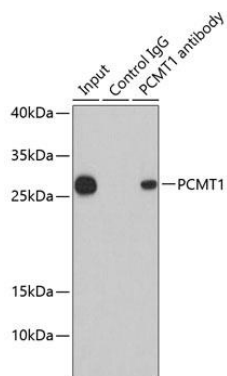
Product Images



Western blot analysis of extracts of various cell lines, using PCMT1 antibody (CAB6684). Secondary antibody: HRP Goat Anti-Rabbit IgG (H+L) (CABS014) at 1:10000 dilution. Lysates/proteins: 25ug per lane. Blocking buffer: 3% nonfat dry milk in TBST. Detection: ECL Basic Kit (CABM00020). Exposure time: 30s.



Immunofluorescence analysis of HeLa cells using PCMT1 antibody (CAB6684). Blue: DAPI for nuclear staining.



Immunoprecipitation analysis of 200ug extracts of HepG2 cells using 1ug PCMT1 antibody (CAB6684). Western blot was performed from the immunoprecipitate using PCMT1 antibody (CAB6684) at a dilution of 1:1000.