

# PDCD6 Rabbit Polyclonal Antibody



CAB6685

## Product Information

### Size:

20uL, 50uL, 100uL, 200uL

### Observed MW:

16kDa

### Calculated MW:

7kDa/21kDa

### Applications:

WB IHC IF IP

### Reactivity:

Human, Mouse, Rat

## Protein Background

This gene encodes a calcium-binding protein belonging to the penta-EF-hand protein family. Calcium binding is important for homodimerization and for conformational changes required for binding to other protein partners. This gene product participates in T cell receptor-, Fas-, and glucocorticoid-induced programmed cell death. In mice deficient for this gene product, however, apoptosis was not blocked suggesting this gene product is functionally redundant. Alternatively spliced transcript variants encoding multiple isoforms have been observed for this gene, and a pseudogene of this gene is also located on the short arm of chromosome 5.

## Immunogen information

### Gene ID:

10016

### Uniprot

O75340

### Synonyms:

PDCD6; ALG-2; ALG2; PEF1B

## Antibody Information

### Recommended dilutions:

WB 1:500 - 1:2000 IHC 1:50

- 1:200 IF 1:50 - 1:100 IP

1:50 - 1:200

### Source:

Rabbit

### Isotype:

IgG

### Purification:

Affinity purification

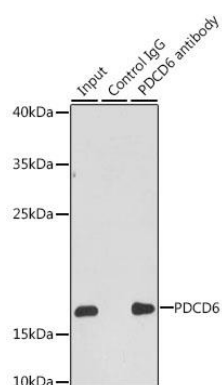
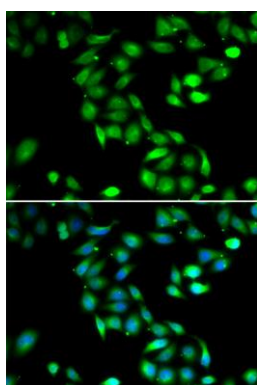
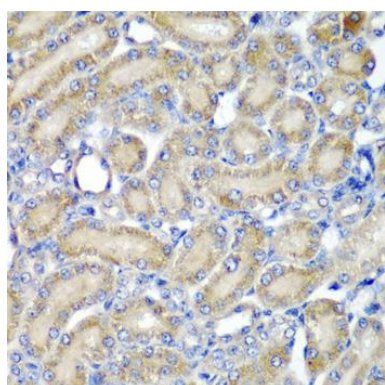
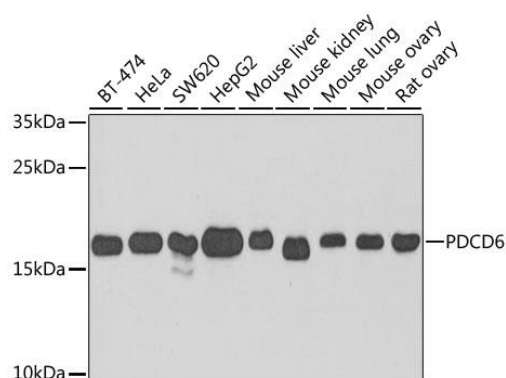
### Immunogen:

Recombinant fusion protein containing a sequence corresponding to amino acids 1-191 of human PDCD6 (NP\_037364.1).

### Storage:

Store at -20°C. Avoid freeze / thaw cycles. Buffer: PBS with 0.02% sodium azide, 50% glycerol, pH7.3.

## Product Images



Western blot analysis of extracts of various cell lines, using PDCD6 antibody (CAB6685) at 1:1000 dilution. Secondary antibody: HRP Goat Anti-Rabbit IgG (H+L) (CABS014) at 1:10000 dilution. Lysates/proteins: 25ug per lane. Blocking buffer: 3% nonfat dry milk in TBST. Detection: ECL Basic Kit (CABM00020). Exposure time: 90s.

Immunohistochemistry of paraffin-embedded rat kidney using PDCD6 antibody (CAB6685) at dilution of 1:200 (40x lens).

Immunofluorescence analysis of HeLa cells using PDCD6 antibody (CAB6685). Blue: DAPI for nuclear staining.

Immunoprecipitation analysis of 200ug extracts of HepG2 cells, using 3 ug PDCD6 antibody (CAB6685). Western blot was performed from the immunoprecipitate using PDCD6 antibody (CAB6685) at a dilution of 1:1000.