

POLG2 Rabbit Polyclonal Antibody



CAB6695

Product Information

Size:

20uL, 50uL, 100uL, 200uL

Observed MW:

55kDa

Calculated MW:

54kDa

Applications:

WB IHC IF

Reactivity:

Human, Mouse, Rat

Protein Background

This gene encodes the processivity subunit of the mitochondrial DNA polymerase gamma. The encoded protein forms a heterotrimer containing one catalytic subunit and two processivity subunits. This protein enhances DNA binding and promotes processive DNA synthesis. Mutations in this gene result in autosomal dominant progressive external ophthalmoplegia with mitochondrial DNA deletions.

Immunogen information

Gene ID:

11232

Uniprot

Q9UHN1

Synonyms:

POLG2; HP55; MTPOLB; PEOA4; POLB; POLG-BETA; POLGB

Antibody Information

Recommended dilutions:

WB 1:500 - 1:2000 IHC 1:50
- 1:200 IF 1:10 - 1:100

Source:

Rabbit

Isotype:

IgG

Purification:

Affinity purification

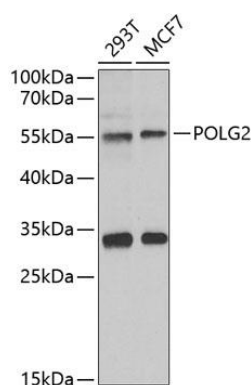
Immunogen:

Recombinant fusion protein containing a sequence corresponding to amino acids 216-485 of human POLG2 (NP_009146.2).

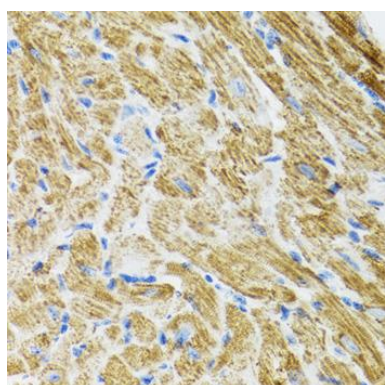
Storage:

Store at -20°C. Avoid freeze / thaw cycles. Buffer: PBS with 0.02% sodium azide, 50% glycerol, pH7.3.

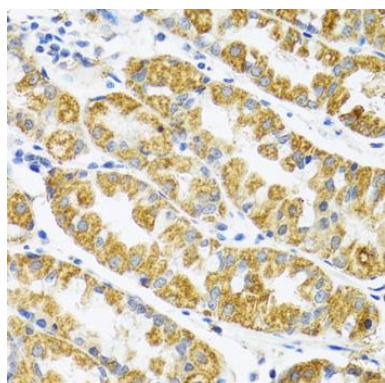
Product Images



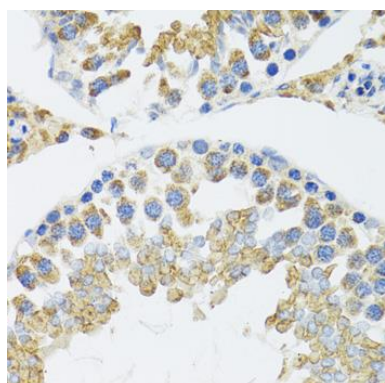
Western blot analysis of extracts of various cell lines, using POLG2 antibody (CAB6695) at 1:1000 dilution. Secondary antibody: HRP Goat Anti-Rabbit IgG (H+L) (CABS014) at 1:10000 dilution. Lysates/proteins: 25ug per lane. Blocking buffer: 3% nonfat dry milk in TBST. Detection: ECL Basic Kit (CABM00020). Exposure time: 90s.



Immunohistochemistry of paraffin-embedded rat heart using POLG2 antibody (CAB6695) at dilution of 1:100 (40x lens).



Immunohistochemistry of paraffin-embedded human stomach using POLG2 antibody (CAB6695) at dilution of 1:100 (40x lens).



Immunohistochemistry of paraffin-embedded mouse testis using POLG2 antibody (CAB6695) at dilution of 1:100 (40x lens).