

# PPP1R8 Rabbit Polyclonal Antibody



CAB6701

## Product Information

### Size:

20uL, 50uL, 100uL, 200uL

### Observed MW:

40kDa

### Calculated MW:

13kDa/22kDa/38kDa

### Applications:

WB IHC IF

### Reactivity:

Human, Mouse, Rat

## Protein Background

This gene, through alternative splicing, encodes three different isoforms. Two of the protein isoforms encoded by this gene are specific inhibitors of type 1 serine/threonine protein phosphatases and can bind but not cleave RNA. The third protein isoform lacks the phosphatase inhibitory function but is a single-strand endoribonuclease comparable to RNase E of E. coli. This isoform requires magnesium for its function and cleaves specific sites in A+U-rich regions of RNA.

## Immunogen information

### Gene ID:

5511

### Uniprot

Q12972

### Synonyms:

PPP1R8; ARD-1; ARD1; NIPP-1; NIPP1; PRO2047

## Antibody Information

### Recommended dilutions:

WB 1:500 - 1:2000 IHC 1:50  
- 1:200 IF 1:50 - 1:100

### Source:

Rabbit

### Isotype:

IgG

### Purification:

Affinity purification

### Immunogen:

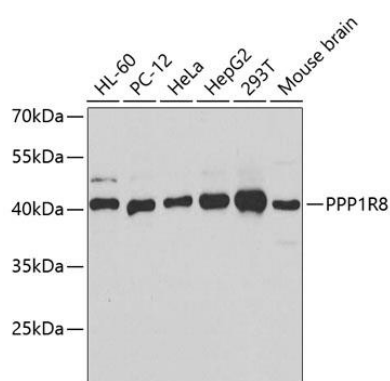
Recombinant fusion protein containing a sequence corresponding to amino acids 1-209 of human PPP1R8 (NP\_612568.1).

### Storage:

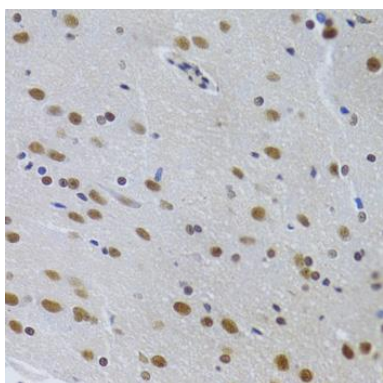
Store at -20°C. Avoid freeze / thaw cycles. Buffer: PBS with 0.02% sodium azide, 50% glycerol, pH7.3.

## Product Images

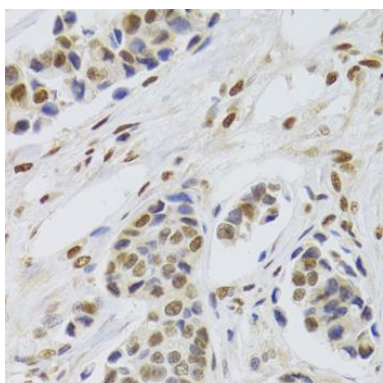
---



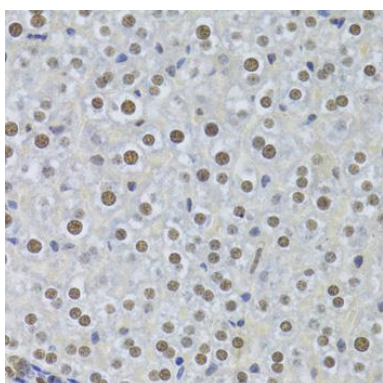
Western blot analysis of extracts of various cell lines, using PPP1R8 antibody (CAB6701) at 1:1000 dilution. Secondary antibody: HRP Goat Anti-Rabbit IgG (H+L) (CABS014) at 1:10000 dilution. Lysates/proteins: 25ug per lane. Blocking buffer: 3% nonfat dry milk in TBST. Detection: ECL Basic Kit (CABM00020). Exposure time: 30s.



Immunohistochemistry of paraffin-embedded rat brain using PPP1R8 Antibody (CAB6701) at dilution of 1:100 (40x lens).



Immunohistochemistry of paraffin-embedded human breast cancer using PPP1R8 Antibody (CAB6701) at dilution of 1:100 (40x lens).



Immunohistochemistry of paraffin-embedded mouse liver using PPP1R8 Antibody (CAB6701) at dilution of 1:100 (40x lens).