

PSAT1 Rabbit Polyclonal Antibody



CAB6707

Product Information

Size:

20uL, 50uL, 100uL, 200uL

Observed MW:

40kDa

Calculated MW:

35kDa/40kDa

Applications:

WB IF

Reactivity:

Human, Mouse, Rat

Protein Background

This gene encodes a member of the class-V pyridoxal-phosphate-dependent aminotransferase family. The encoded protein is a phosphoserine aminotransferase and decreased expression may be associated with schizophrenia. Mutations in this gene are also associated with phosphoserine aminotransferase deficiency. Alternative splicing results in multiple transcript variants. Pseudogenes of this gene have been defined on chromosomes 1, 3, and 8.

Immunogen information

Gene ID:

29968

Uniprot

Q9Y617

Synonyms:

PSAT1; EPIP; NLS2; PSA; PSAT; PSATD

Antibody Information

Recommended dilutions:

WB 1:500 - 1:2000 IF 1:10 - 1:100

Source:

Rabbit

Isotype:

IgG

Purification:

Affinity purification

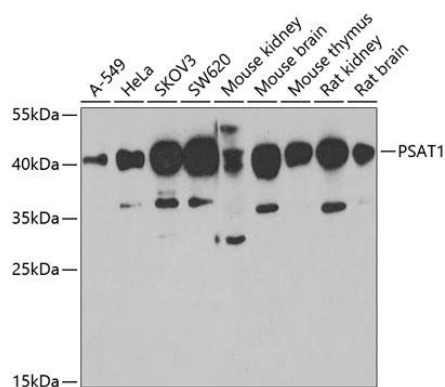
Immunogen:

Recombinant fusion protein containing a sequence corresponding to amino acids 1-370 of human PSAT1 (NP_478059.1).

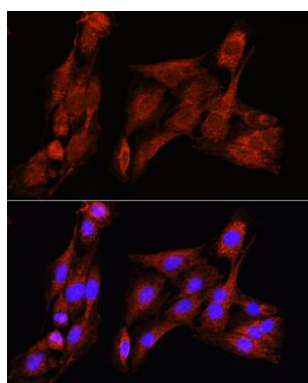
Storage:

Store at -20°C. Avoid freeze / thaw cycles. Buffer: PBS with 0.02% sodium azide, 50% glycerol, pH7.3.

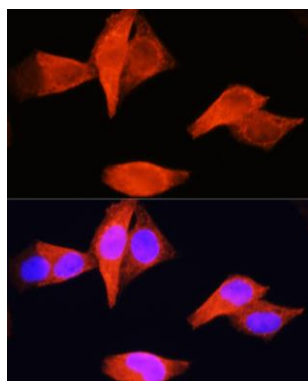
Product Images



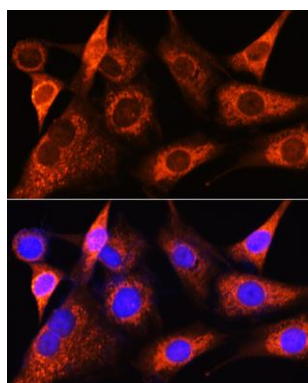
Western blot analysis of extracts of various cell lines, using PSAT1 antibody (CAB6707) at 1:1000 dilution. Secondary antibody: HRP Goat Anti-Rabbit IgG (H+L) (CABS014) at 1:10000 dilution. Lysates/proteins: 25ug per lane. Blocking buffer: 3% nonfat dry milk in TBST. Detection: ECL Basic Kit (CABM00020). Exposure time: 90s.



Immunofluorescence analysis of C6 cells using PSAT1 Rabbit pAb (CAB6707) at dilution of 1:100 (40x lens). Blue: DAPI for nuclear staining.



Immunofluorescence analysis of HeLa cells using PSAT1 Rabbit pAb (CAB6707) at dilution of 1:100 (40x lens). Blue: DAPI for nuclear staining.



Immunofluorescence analysis of NIH-3T3 cells using PSAT1 Rabbit pAb (CAB6707) at dilution of 1:100 (40x lens). Blue: DAPI for nuclear staining.