

RAE1 Rabbit Polyclonal Antibody



CAB6713

Product Information

Size:

20uL, 50uL, 100uL, 200uL

Observed MW:

40kDa

Calculated MW:

40kDa

Applications:

WB IHC IF

Reactivity:

Human, Mouse, Rat

Antibody Information

Recommended dilutions:

WB 1:500 - 1:2000 IHC 1:50
- 1:200 IF 1:50 - 1:200

Source:

Rabbit

Isotype:

IgG

Purification:

Affinity purification

Protein Background

Mutations in the *Schizosaccharomyces pombe* Rae1 and *Saccharomyces cerevisiae* Gle2 genes have been shown to result in accumulation of poly(A)-containing mRNA in the nucleus, suggesting that the encoded proteins are involved in RNA export. The protein encoded by this gene is a homolog of yeast Rae1. It contains four WD40 motifs, and has been shown to localize to distinct foci in the nucleoplasm, to the nuclear rim, and to meshwork-like structures throughout the cytoplasm. This gene is thought to be involved in nucleocytoplasmic transport, and in directly or indirectly attaching cytoplasmic mRNPs to the cytoskeleton. Alternatively spliced transcript variants encoding the same protein have been found for this gene.

Immunogen information

Gene ID:

8480

Uniprot

P78406

Synonyms:

RAE1; MIG14; MRNP41; Mnrp41; dJ481F12.3; dJ800J21.1

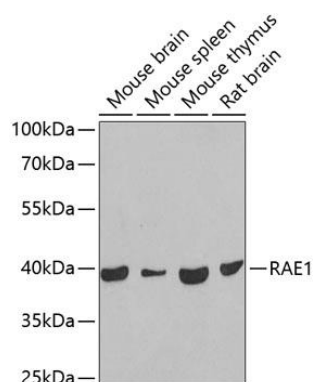
Immunogen:

Recombinant fusion protein containing a sequence corresponding to amino acids 1-368 of human RAE1 (NP_003601.1).

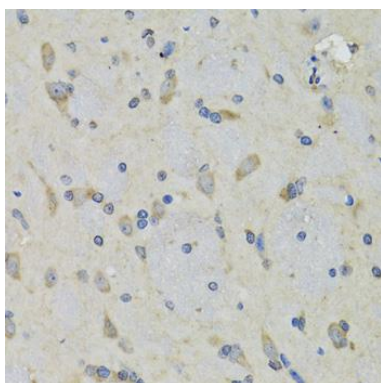
Storage:

Store at -20°C. Avoid freeze / thaw cycles. Buffer: PBS with 0.02% sodium azide, 50% glycerol, pH7.3.

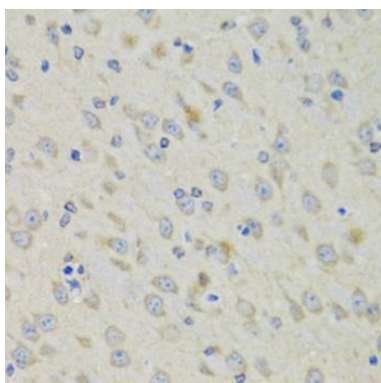
Product Images



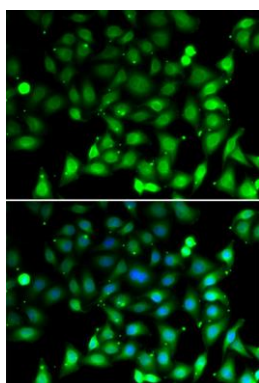
Western blot analysis of extracts of various cell lines, using RAE1 antibody (CAB6713) at 1:1000 dilution. Secondary antibody: HRP Goat Anti-Rabbit IgG (H+L) (CABS014) at 1:10000 dilution. Lysates/proteins: 25ug per lane. Blocking buffer: 3% nonfat dry milk in TBST. Detection: ECL Basic Kit (CABM00020). Exposure time: 10s.



Immunohistochemistry of paraffin-embedded rat brain using RAE1 antibody (CAB6713) at dilution of 1:100 (40x lens).



Immunohistochemistry of paraffin-embedded mouse brain using RAE1 antibody (CAB6713) at dilution of 1:100 (40x lens).



Immunofluorescence analysis of MCF-7 cells using RAE1 antibody (CAB6713). Blue: DAPI for nuclear staining.