

RBP2 Rabbit Polyclonal Antibody



CAB6717

Product Information

Size:

20uL, 50uL, 100uL, 200uL

Observed MW:

15-17kDa

Calculated MW:

15kDa

Applications:

WB IHC IF

Reactivity:

Human, Mouse, Rat

Protein Background

This gene encodes an abundant protein present in the small intestinal epithelium. It is thought to participate in the uptake and/or intracellular metabolism of vitamin A. Vitamin A is a fat-soluble vitamin necessary for growth, reproduction, differentiation of epithelial tissues, and vision. This protein may also modulate the supply of retinoic acid to the nuclei of endometrial cells during the menstrual cycle.

Immunogen information

Gene ID:

5948

Uniprot

P50120

Synonyms:

RBP2; CRABP-II; CRBP2; CRBP2II; RBPC2

Antibody Information

Recommended dilutions:

WB 1:500 - 1:2000 IHC 1:50
- 1:200 IF 1:50 - 1:100

Source:

Rabbit

Isotype:

IgG

Purification:

Affinity purification

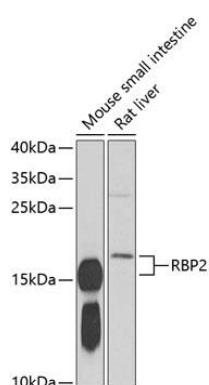
Immunogen:

Recombinant fusion protein containing a sequence corresponding to amino acids 1-134 of human RBP2 (NP_004155.2).

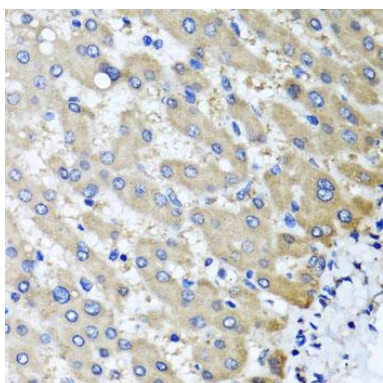
Storage:

Store at -20°C. Avoid freeze / thaw cycles. Buffer: PBS with 0.02% sodium azide, 50% glycerol, pH7.3.

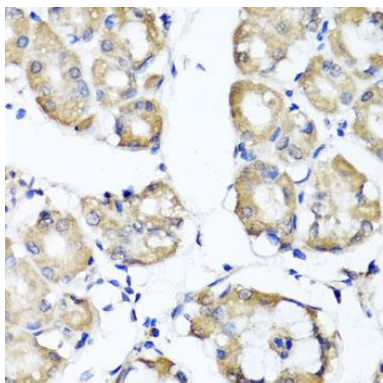
Product Images



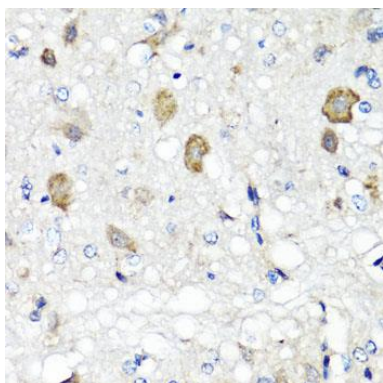
Western blot analysis of extracts of various cell lines, using RBP2 antibody (CAB6717) at 1:1000 dilution. Secondary antibody: HRP Goat Anti-Rabbit IgG (H+L) (CABS014) at 1:10000 dilution. Lysates/proteins: 25ug per lane. Blocking buffer: 3% nonfat dry milk in TBST. Detection: ECL Basic Kit (CABM00020). Exposure time: 60s.



Immunohistochemistry of paraffin-embedded human liver damage using RBP2 antibody (CAB6717) at dilution of 1:100 (40x lens).



Immunohistochemistry of paraffin-embedded human stomach using RBP2 antibody (CAB6717) at dilution of 1:100 (40x lens).



Immunohistochemistry of paraffin-embedded rat brain using RBP2 antibody (CAB6717) at dilution of 1:100 (40x lens).