

RPL13 Rabbit Polyclonal Antibody



CAB6723

Product Information

Size:

20uL, 50uL, 100uL, 200uL

Observed MW:

24kDa

Calculated MW:

18kDa/24kDa

Applications:

WB IHC IF

Reactivity:

Human, Mouse, Rat

Antibody Information

Recommended dilutions:

WB 1:500 - 1:2000 IHC 1:50
- 1:200 IF 1:50 - 1:200

Source:

Rabbit

Isotype:

IgG

Purification:

Affinity purification

Protein Background

Ribosomes, the organelles that catalyze protein synthesis, consist of a small 40S subunit and a large 60S subunit. Together these subunits are composed of 4 RNA species and approximately 80 structurally distinct proteins. This gene encodes a ribosomal protein that is a component of the 60S subunit. The protein belongs to the L13E family of ribosomal proteins. It is located in the cytoplasm. This gene is expressed at significantly higher levels in benign breast lesions than in breast carcinomas. Alternatively spliced transcript variants encoding distinct isoforms have been found for this gene. As is typical for genes encoding ribosomal proteins, there are multiple processed pseudogenes of this gene dispersed through the genome.

Immunogen information

Gene ID:

6137

Uniprot

P26373

Synonyms:

RPL13; BBC1; D16S444E; D16S44E; L13

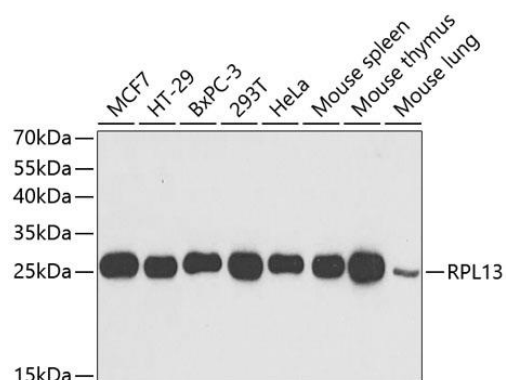
Immunogen:

Recombinant fusion protein containing a sequence corresponding to amino acids 1-211 of human RPL13 (NP_150254.1).

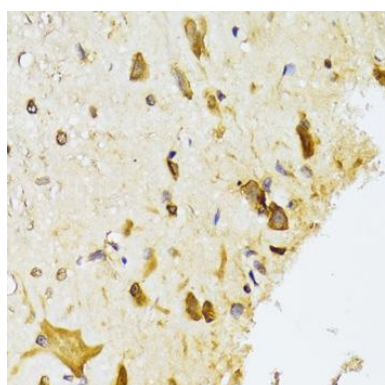
Storage:

Store at -20°C. Avoid freeze / thaw cycles. Buffer: PBS with 0.02% sodium azide, 50% glycerol, pH7.3.

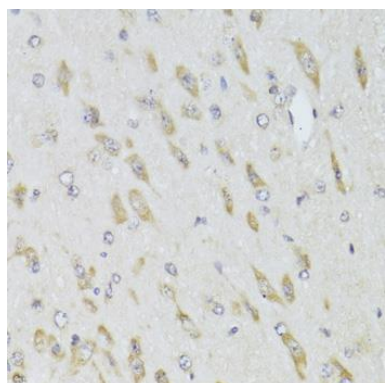
Product Images



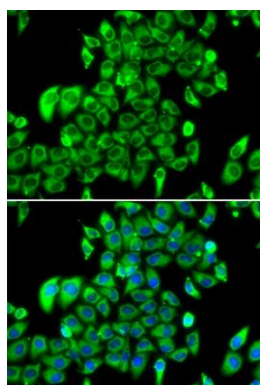
Western blot analysis of extracts of various cell lines, using RPL13 antibody (CAB6723) at 1:1000 dilution. Secondary antibody: HRP Goat Anti-Rabbit IgG (H+L) (CABS014) at 1:10000 dilution. Lysates/proteins: 25ug per lane. Blocking buffer: 3% nonfat dry milk in TBST. Detection: ECL Basic Kit (CABM00020). Exposure time: 1s.



Immunohistochemistry of paraffin-embedded rat spinal cord using RPL13 Antibody (CAB6723) at dilution of 1:100 (40x lens).



Immunohistochemistry of paraffin-embedded mouse brain using RPL13 Antibody (CAB6723) at dilution of 1:100 (40x lens).



Immunofluorescence analysis of MCF-7 cells using RPL13 antibody (CAB6723). Blue: DAPI for nuclear staining.