

# RPN1 Rabbit Polyclonal Antibody



CAB6726

## Product Information

### Size:

20uL, 50uL, 100uL, 200uL

### Observed MW:

68kDa

### Calculated MW:

68kDa

### Applications:

WB IHC IF

### Reactivity:

Human, Rat

## Protein Background

This gene encodes a type I integral membrane protein found only in the rough endoplasmic reticulum. The encoded protein is part of an N-oligosaccharyl transferase complex that links high mannose oligosaccharides to asparagine residues found in the Asn-X-Ser/Thr consensus motif of nascent polypeptide chains. This protein forms part of the regulatory subunit of the 26S proteasome and may mediate binding of ubiquitin-like domains to this proteasome.

## Immunogen information

### Gene ID:

6184

### Uniprot

P04843

### Synonyms:

RPN1; OST1; RBPH1

## Antibody Information

### Recommended dilutions:

WB 1:500 - 1:2000 IHC 1:50  
- 1:100 IF 1:50 - 1:100

### Source:

Rabbit

### Isotype:

IgG

### Purification:

Affinity purification

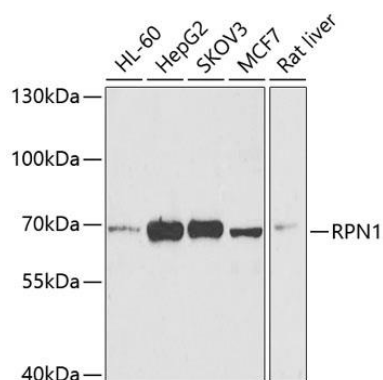
### Immunogen:

Recombinant fusion protein containing a sequence corresponding to amino acids 20-280 of human RPN1 (NP\_002941.1).

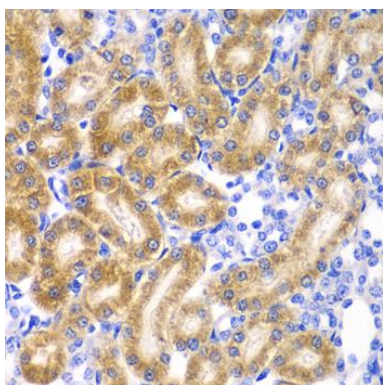
### Storage:

Store at -20°C. Avoid freeze / thaw cycles. Buffer: PBS with 0.02% sodium azide, 50% glycerol, pH7.3.

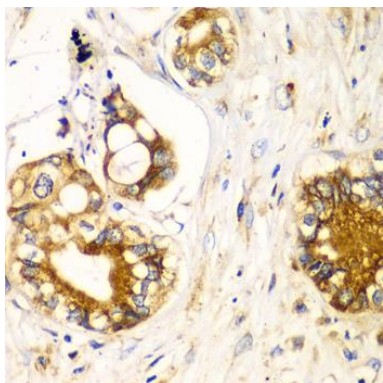
## Product Images



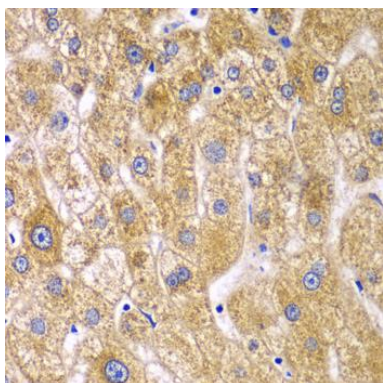
Western blot analysis of extracts of various cell lines, using RPN1 antibody (CAB6726) at 1:1000 dilution. Secondary antibody: HRP Goat Anti-Rabbit IgG (H+L) (CABS014) at 1:10000 dilution. Lysates/proteins: 25ug per lane. Blocking buffer: 3% nonfat dry milk in TBST. Detection: ECL Basic Kit (CABM00020). Exposure time: 90s.



Immunohistochemistry of paraffin-embedded rat kidney using RPN1 antibody (CAB6726) at dilution of 1:100 (40x lens).



Immunohistochemistry of paraffin-embedded human liver cancer using RPN1 antibody (CAB6726) at dilution of 1:100 (40x lens).



Immunohistochemistry of paraffin-embedded human liver damage using RPN1 antibody (CAB6726) at dilution of 1:100 (40x lens).