

RPS2 Rabbit Polyclonal Antibody



CAB6728

Product Information

Size:

20uL, 50uL, 100uL, 200uL

Observed MW:

38kDa

Calculated MW:

31kDa

Applications:

WB IHC

Reactivity:

Human, Mouse, Rat

Antibody Information

Recommended dilutions:

WB 1:500 - 1:2000 IHC 1:50
- 1:200

Source:

Rabbit

Isotype:

IgG

Purification:

Affinity purification

Protein Background

Ribosomes, the organelles that catalyze protein synthesis, consist of a small 40S subunit and a large 60S subunit. Together these subunits are composed of 4 RNA species and approximately 80 structurally distinct proteins. This gene encodes a ribosomal protein that is a component of the 40S subunit. The protein belongs to the S5P family of ribosomal proteins. It is located in the cytoplasm. This gene shares sequence similarity with mouse LLRep3. It is co-transcribed with the small nucleolar RNA gene U64, which is located in its third intron. As is typical for genes encoding ribosomal proteins, there are multiple processed pseudogenes of this gene dispersed through the genome.

Immunogen information

Gene ID:

6187

Uniprot

P15880

Synonyms:

RPS2; LLREP3; S2

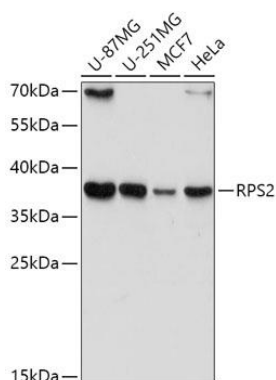
Immunogen:

Recombinant fusion protein containing a sequence corresponding to amino acids 1-293 of human RPS2 (NP_002943.2).

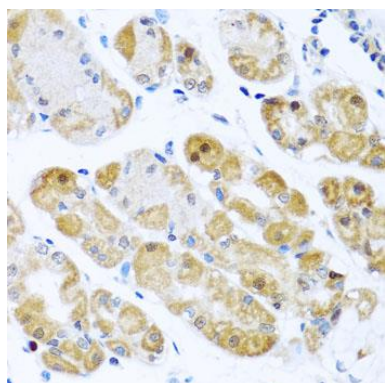
Storage:

Store at -20°C. Avoid freeze / thaw cycles. Buffer: PBS with 0.02% sodium azide, 50% glycerol, pH7.3.

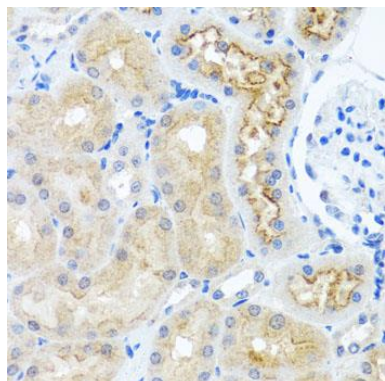
Product Images



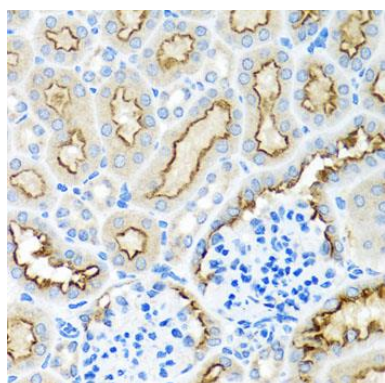
Western blot analysis of extracts of various cell lines, using RPS2 antibody (CAB6728) at 1:1000 dilution. Secondary antibody: HRP Goat Anti-Rabbit IgG (H+L) (CABS014) at 1:10000 dilution. Lysates/proteins: 25ug per lane. Blocking buffer: 3% nonfat dry milk in TBST. Detection: ECL Basic Kit (CABM00020). Exposure time: 15s.



Immunohistochemistry of paraffin-embedded human stomach using RPS2 antibody (CAB6728) at dilution of 1:100 (40x lens).



Immunohistochemistry of paraffin-embedded rat kidney using RPS2 antibody (CAB6728) at dilution of 1:100 (40x lens).



Immunohistochemistry of paraffin-embedded mouse kidney using RPS2 antibody (CAB6728) at dilution of 1:100 (40x lens).