

# SCYL1 Rabbit Polyclonal Antibody



CAB6735

## Product Information

### Size:

20uL, 50uL, 100uL, 200uL

### Observed MW:

110kDa

### Calculated MW:

69kDa/78kDa/86kDa/88kDa/  
89kDa

### Applications:

WB IHC IF

### Reactivity:

Human, Mouse, Rat

## Antibody Information

### Recommended dilutions:

WB 1:500 - 1:2000 IHC 1:50  
- 1:200 IF 1:50 - 1:100

### Source:

Rabbit

### Isotype:

IgG

### Purification:

Affinity purification

## Protein Background

This gene encodes a transcriptional regulator belonging to the SCY1-like family of kinase-like proteins. The protein has a divergent N-terminal kinase domain that is thought to be catalytically inactive, and can bind specific DNA sequences through its C-terminal domain. It activates transcription of the telomerase reverse transcriptase and DNA polymerase beta genes. The protein has been localized to the nucleus, and also to the cytoplasm and centrosomes during mitosis. Multiple transcript variants encoding different isoforms have been found for this gene.

## Immunogen information

### Gene ID:

57410

### Uniprot

Q96KG9

### Synonyms:

SCYL1; GKLP; HT019; NKTL; NTKL; P105; SCAR21; TAPK; TEIF; TRAP

### Immunogen:

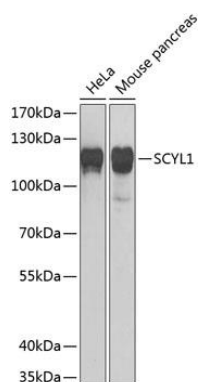
Recombinant fusion protein containing a sequence corresponding to amino acids 460-740 of human SCYL1 (NP\_065731.3).

### Storage:

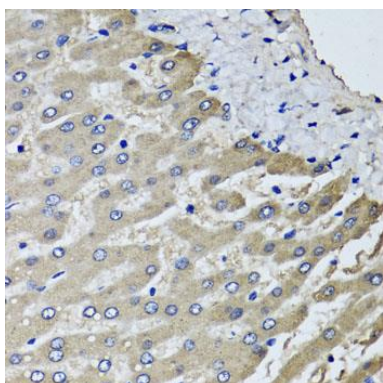
Store at -20°C. Avoid freeze / thaw cycles. Buffer: PBS with 0.02% sodium azide, 50% glycerol, pH7.3.

## Product Images

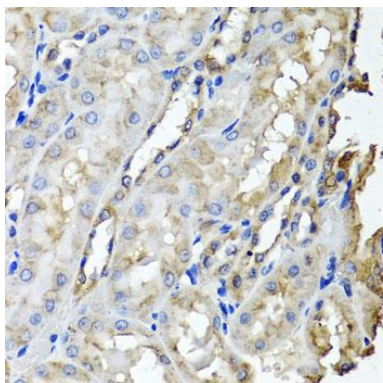
---



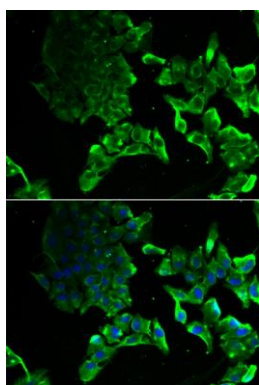
Western blot analysis of extracts of various cell lines, using SCYL1 Antibody (CAB6735) at 1:1000 dilution. Secondary antibody: HRP Goat Anti-Rabbit IgG (H+L) (CABS014) at 1:10000 dilution. Lysates/proteins: 25ug per lane. Blocking buffer: 3% nonfat dry milk in TBST. Detection: ECL Basic Kit (CABM00020). Exposure time: 5s.



Immunohistochemistry of paraffin-embedded human liver tissue using SCYL1 antibody (CAB6735) at dilution of 1:100 (40x lens).



Immunohistochemistry of paraffin-embedded rat kidney tissue using SCYL1 antibody (CAB6735) at dilution of 1:100 (40x lens).



Immunofluorescence analysis of MCF-7 cells using SCYL1 antibody (CAB6735). Blue: DAPI for nuclear staining.