

# SECISBP2 Rabbit Polyclonal Antibody



CAB6736

## Product Information

### Size:

20uL, 50uL, 100uL, 200uL

### Observed MW:

110kDa

### Calculated MW:

87kDa/95kDa

### Applications:

WB IHC IF

### Reactivity:

Human, Mouse

## Antibody Information

### Recommended dilutions:

WB 1:500 - 1:2000 IHC 1:50  
- 1:200 IF 1:50 - 1:100

### Source:

Rabbit

### Isotype:

IgG

### Purification:

Affinity purification

## Protein Background

The incorporation of selenocysteine into a protein requires the concerted action of an mRNA element called a sec insertion sequence (SECIS), a selenocysteine-specific translation elongation factor and a SECIS binding protein. With these elements in place, a UGA codon can be decoded as selenocysteine. The gene described in this record encodes a nuclear protein that functions as a SECIS binding protein. Mutations in this gene have been associated with a reduction in activity of a specific thyroxine deiodinase, a selenocysteine-containing enzyme, and abnormal thyroid hormone metabolism. Alternate splicing results in multiple transcript variants.

## Immunogen information

### Gene ID:

79048

### Uniprot

Q96T21

### Synonyms:

SECISBP2; SBP2

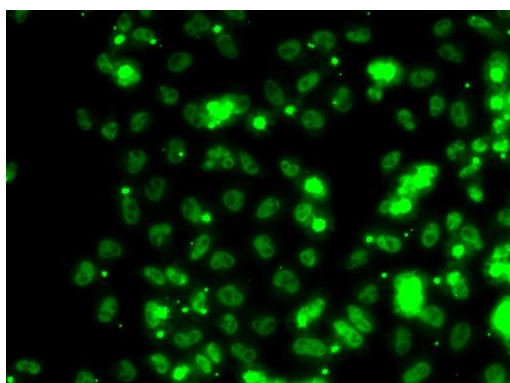
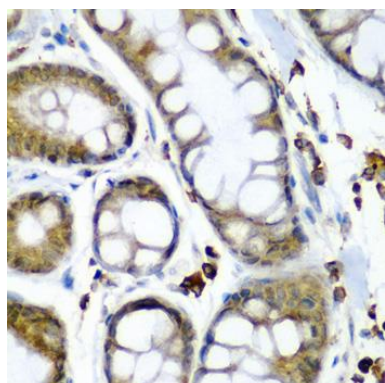
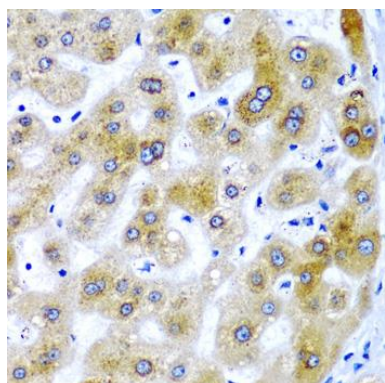
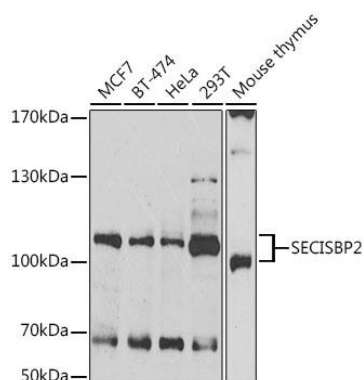
### Immunogen:

Recombinant fusion protein containing a sequence corresponding to amino acids 585-854 of human SECISBP2 (NP\_076982.3).

### Storage:

Store at -20°C. Avoid freeze / thaw cycles. Buffer: PBS with 0.02% sodium azide, 50% glycerol, pH7.3.

## Product Images



Western blot analysis of extracts of various cell lines, using SECISBP2 antibody (CAB6736) at 1:1000 dilution. Secondary antibody: HRP Goat Anti-Rabbit IgG (H+L) (CABS014) at 1:10000 dilution. Lysates/proteins: 25ug per lane. Blocking buffer: 3% nonfat dry milk in TBST. Detection: ECL Enhanced Kit (CABM00021). Exposure time: 5min.

Immunohistochemistry of paraffin-embedded human liver tissue using SECISBP2 antibody (CAB6736) at dilution of 1:200 (40x lens).

Immunohistochemistry of paraffin-embedded human colon carcinoma using SECISBP2 antibody (CAB6736) at dilution of 1:200 (40x lens).

Immunofluorescence analysis of HeLa cells using SECISBP2 antibody (CAB6736).