

SETMAR Rabbit Polyclonal Antibody



CAB6738

Product Information

Size:

20uL, 50uL, 100uL, 200uL

Observed MW:

Refer to Figures

Calculated MW:

40kDa/62kDa/78kDa

Applications:

WB IF

Reactivity:

Human

Protein Background

This gene encodes a fusion protein that contains an N-terminal histone-lysine N-methyltransferase domain and a C-terminal mariner transposase domain. The encoded protein binds DNA and functions in DNA repair activities including non-homologous end joining and double strand break repair. The SET domain portion of this protein specifically methylates histone H3 lysines 4 and 36. This gene exists as a fusion gene only in anthropoid primates, other organisms lack mariner transposase domain. Alternate splicing results in multiple transcript variants.

Immunogen information

Gene ID:

6419

Uniprot

Q53H47

Synonyms:

SETMAR; METNASE; Mar1

Antibody Information

Recommended dilutions:

WB 1:500 - 1:2000 IF 1:20 - 1:50

Source:

Rabbit

Isotype:

IgG

Purification:

Affinity purification

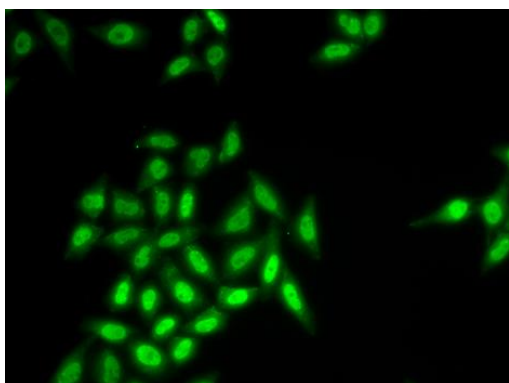
Immunogen:

Recombinant fusion protein containing a sequence corresponding to amino acids 20-300 of human SETMAR (NP_006506.3).

Storage:

Store at -20°C. Avoid freeze / thaw cycles. Buffer: PBS with 0.02% sodium azide, 50% glycerol, pH7.3.

Product Images



Immunofluorescence analysis of HeLa cells using SETMAR antibody (CAB6738).