

# SLC20A2 Rabbit Polyclonal Antibody



CAB6739

## Product Information

### Size:

20uL, 50uL, 100uL, 200uL

### Observed MW:

70kDa

### Calculated MW:

70kDa

### Applications:

WB IF

### Reactivity:

Human, Mouse, Rat

## Antibody Information

### Recommended dilutions:

WB 1:500 - 1:2000 IF 1:10 - 1:100

### Source:

Rabbit

### Isotype:

IgG

### Purification:

Affinity purification

## Protein Background

This gene encodes a member of the inorganic phosphate transporter family. The encoded protein is a type 3 sodium-dependent phosphate symporter that plays an important role in phosphate homeostasis by mediating cellular phosphate uptake. The encoded protein also confers susceptibility to viral infection as a gamma-retroviral receptor. Mutations in this gene may play a role in familial idiopathic basal ganglia calcification. Alternatively spliced transcript variants encoding multiple isoforms have been observed for this gene.

## Immunogen information

### Gene ID:

6575

### Uniprot

Q08357

### Synonyms:

SLC20A2; GLVR-2; GLVR2; IBGC1; IBGC3; MLVAR; PIT-2; PIT2; RAM1; Ram-1

### Immunogen:

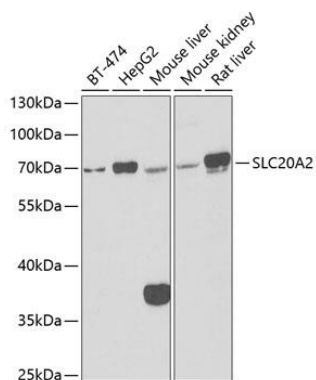
Recombinant fusion protein containing a sequence corresponding to amino acids 235-485 of human SLC20A2 (NP\_001244110.1).

### Storage:

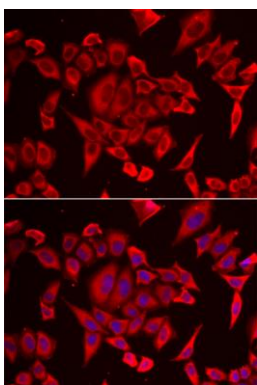
Store at -20°C. Avoid freeze / thaw cycles. Buffer: PBS with 0.02% sodium azide, 50% glycerol, pH7.3.

## Product Images

---



Western blot analysis of extracts of various cell lines, using SLC20A2 antibody (CAB6739) at 1:1000 dilution. Secondary antibody: HRP Goat Anti-Rabbit IgG (H+L) (CABS014) at 1:10000 dilution. Lysates/proteins: 25ug per lane. Blocking buffer: 3% nonfat dry milk in TBST. Detection: ECL Basic Kit (CABM00020). Exposure time: 90s.



Immunofluorescence analysis of HeLa cells using SLC20A2 antibody (CAB6739). Blue: DAPI for nuclear staining.