

SLC34A1 Rabbit Polyclonal Antibody



CAB6742

Product Information

Size:

20uL, 50uL, 100uL, 200uL

Observed MW:

69kDa

Calculated MW:

36kDa/68kDa

Applications:

WB IF

Reactivity:

Human, Mouse, Rat

Antibody Information

Recommended dilutions:

WB 1:500 - 1:2000 IF 1:10 - 1:100

Source:

Rabbit

Isotype:

IgG

Purification:

Affinity purification

Protein Background

This gene encodes a member of the type II sodium-phosphate cotransporter family. Mutations in this gene are associated with hypophosphatemia nephrolithiasis/osteoporosis 1. Alternative splicing results in multiple transcript variants.

Immunogen information

Gene ID:

6569

Uniprot

Q06495

Synonyms:

SLC34A1; FRTS2; HCINF2; NAPI-3; NPHLOP1; NPT2; NPTIIa; SLC11; SLC17A2

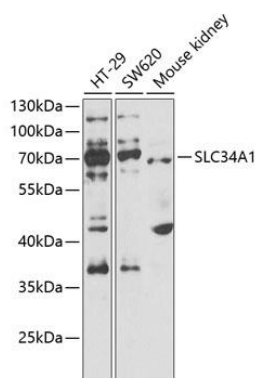
Immunogen:

Recombinant fusion protein containing a sequence corresponding to amino acids 1-103 of human SLC34A1 (NP_003043.3).

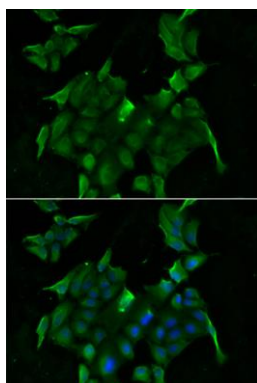
Storage:

Store at -20°C. Avoid freeze / thaw cycles. Buffer: PBS with 0.02% sodium azide, 50% glycerol, pH7.3.

Product Images



Western blot analysis of extracts of various cell lines, using SLC34A1 antibody (CAB6742) at 1:1000 dilution. Secondary antibody: HRP Goat Anti-Rabbit IgG (H+L) (CABS014) at 1:10000 dilution. Lysates/proteins: 25ug per lane. Blocking buffer: 3% nonfat dry milk in TBST. Detection: ECL Basic Kit (CABM00020). Exposure time: 30s.



Immunofluorescence analysis of HeLa cells using SLC34A1 antibody (CAB6742). Blue: DAPI for nuclear staining.