

SMTN Rabbit Polyclonal Antibody



CAB6745

Product Information

Size:

20uL, 50uL, 100uL, 200uL

Observed MW:

117kDa

Calculated MW:

50kDa/98kDa/99kDa/101kDa

Applications:

WB

Reactivity:

Human, Mouse, Rat

Protein Background

This gene encodes a structural protein that is found exclusively in contractile smooth muscle cells. It associates with stress fibers and constitutes part of the cytoskeleton. This gene is localized to chromosome 22q12.3, distal to the TUPLE1 locus and outside the DiGeorge syndrome deletion. Alternative splicing of this gene results in multiple transcript variants encoding distinct isoforms.

Immunogen information

Gene ID:

6525

Uniprot

P53814

Synonyms:

SMTN

Antibody Information

Recommended dilutions:

WB 1:500 - 1:2000

Source:

Rabbit

Isotype:

IgG

Purification:

Affinity purification

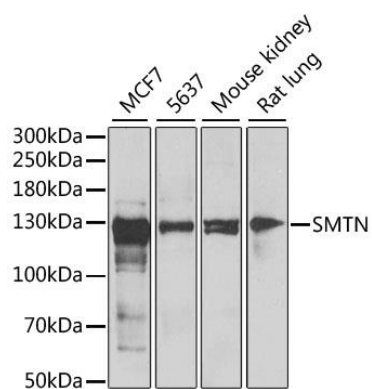
Immunogen:

Recombinant fusion protein containing a sequence corresponding to amino acids 65-325 of human SMTN (NP_001193946.1).

Storage:

Store at -20°C. Avoid freeze / thaw cycles. Buffer: PBS with 0.02% sodium azide, 50% glycerol, pH7.3.

Product Images



Western blot analysis of extracts of various cell lines, using SMTN antibody (CAB6745) at 1:1000 dilution. Secondary antibody: HRP Goat Anti-Rabbit IgG (H+L) (CABS014) at 1:10000 dilution. Lysates/proteins: 25ug per lane. Blocking buffer: 3% nonfat dry milk in TBST. Detection: ECL Enhanced Kit (CABM00021). Exposure time: 5min.