

SPINT2 Rabbit Polyclonal Antibody



CAB6749

Product Information

Size:

20uL, 50uL, 100uL, 200uL

Observed MW:

34kDa

Calculated MW:

21kDa/28kDa

Applications:

WB IHC IF

Reactivity:

Human

Protein Background

This gene encodes a transmembrane protein with two extracellular Kunitz domains that inhibits a variety of serine proteases. The protein inhibits HGF activator which prevents the formation of active hepatocyte growth factor. This gene is a putative tumor suppressor, and mutations in this gene result in congenital sodium diarrhea. Multiple transcript variants encoding different isoforms have been found for this gene.

Immunogen information

Gene ID:

10653

Uniprot

O43291

Synonyms:

SPINT2; DIAR3; HAI-2; HAI2; Kop; PB

Antibody Information

Recommended dilutions:

WB 1:500 - 1:2000 IHC 1:50
- 1:200 IF 1:50 - 1:100

Source:

Rabbit

Isotype:

IgG

Purification:

Affinity purification

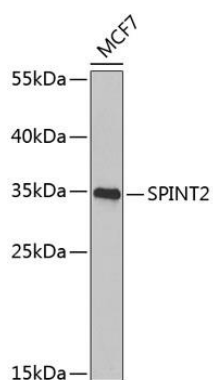
Immunogen:

Recombinant fusion protein containing a sequence corresponding to amino acids 28-197 of human SPINT2 (NP_066925.1).

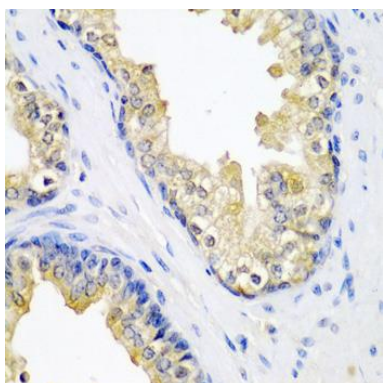
Storage:

Store at -20°C. Avoid freeze / thaw cycles. Buffer: PBS with 0.02% sodium azide, 50% glycerol, pH7.3.

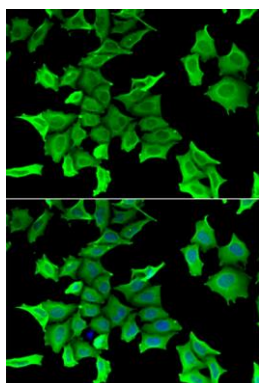
Product Images



Western blot analysis of extracts of MCF-7 cells, using SPINT2 Antibody (CAB6749) at 1:1000 dilution. Secondary antibody: HRP Goat Anti-Rabbit IgG (H+L) (CABS014) at 1:10000 dilution. Lysates/proteins: 25ug per lane. Blocking buffer: 3% nonfat dry milk in TBST. Detection: ECL Basic Kit (CABM00020). Exposure time: 10s.



Immunohistochemistry of paraffin-embedded human prostate using SPINT2 antibody (CAB6749) at dilution of 1:200 (40x lens).



Immunofluorescence analysis of HeLa cells using SPINT2 antibody (CAB6749). Blue: DAPI for nuclear staining.