

SRP19 Rabbit Polyclonal Antibody



CAB6752

Product Information

Size:

20uL, 50uL, 100uL, 200uL

Observed MW:

16kDa

Calculated MW:

8kDa/12kDa/16kDa

Applications:

WB IHC IF

Reactivity:

Human, Mouse, Rat

Antibody Information

Recommended dilutions:

WB 1:500 - 1:2000 IHC 1:50
- 1:200 IF 1:10 - 1:100

Source:

Rabbit

Isotype:

IgG

Purification:

Affinity purification

Protein Background

Immunogen information

Gene ID:

6728

Uniprot

P09132

Synonyms:

SRP19

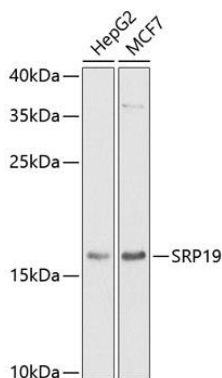
Immunogen:

Recombinant fusion protein containing a sequence corresponding to amino acids 1-144 of human SRP19 (NP_003126.1).

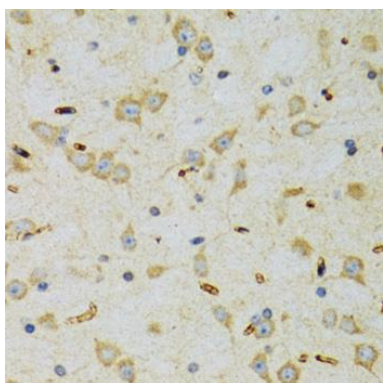
Storage:

Store at -20°C. Avoid freeze / thaw cycles. Buffer: PBS with 0.02% sodium azide, 50% glycerol, pH7.3.

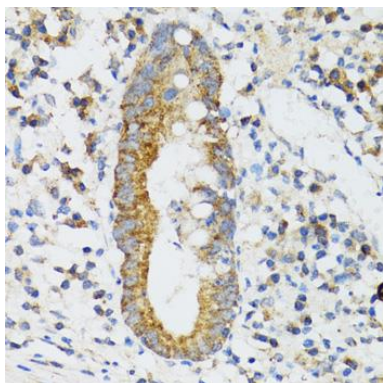
Product Images



Western blot analysis of extracts of various cell lines, using SRP19 antibody (CAB6752) at 1:1000 dilution. Secondary antibody: HRP Goat Anti-Rabbit IgG (H+L) (CABS014) at 1:10000 dilution. Lysates/proteins: 25ug per lane. Blocking buffer: 3% nonfat dry milk in TBST. Detection: ECL Basic Kit (CABM00020). Exposure time: 90s.



Immunohistochemistry of paraffin-embedded rat brain using SRP19 antibody (CAB6752) at dilution of 1:100 (40x lens).



Immunohistochemistry of paraffin-embedded human vermiform appendix using SRP19 antibody (CAB6752) at dilution of 1:100 (40x lens).