

# [KO Validated] TAGLN2 Rabbit Polyclonal Antibody

CAB6761



## Product Information

### Size:

20uL, 50uL, 100uL, 200uL

### Observed MW:

18kDa

### Calculated MW:

22kDa/24kDa

### Applications:

WB IF

### Reactivity:

Human, Mouse

## Protein Background

The protein encoded by this gene is similar to the protein transgelin, which is one of the earliest markers of differentiated smooth muscle. The specific function of this protein has not yet been determined, although it is thought to be a tumor suppressor. Multiple transcript variants encoding different isoforms have been found for this gene.

## Immunogen information

### Gene ID:

8407

### Uniprot

P37802

### Synonyms:

TAGLN2; HA1756

## Antibody Information

### Recommended dilutions:

WB 1:500 - 1:2000 IF 1:50 - 1:200

### Source:

Rabbit

### Isotype:

IgG

### Purification:

Affinity purification

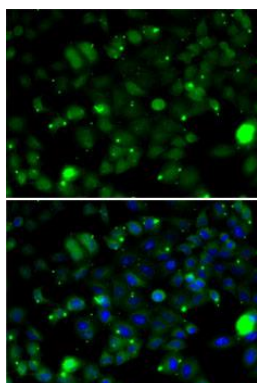
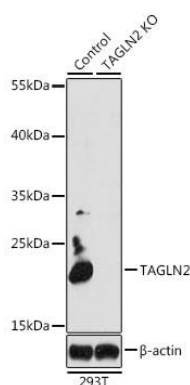
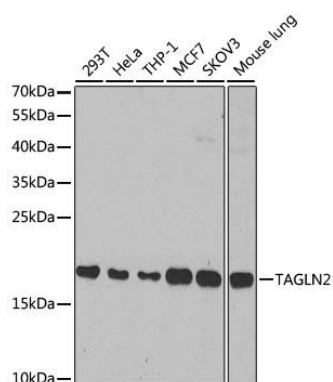
### Immunogen:

Recombinant fusion protein containing a sequence corresponding to amino acids 1-199 of human TAGLN2 (NP\_003555.1).

### Storage:

Store at -20°C. Avoid freeze / thaw cycles. Buffer: PBS with 0.02% sodium azide, 50% glycerol, pH7.3.

## Product Images



Western blot analysis of extracts of various cell lines, using TAGLN2 antibody (CAB6761) at 1:1000 dilution. Secondary antibody: HRP Goat Anti-Rabbit IgG (H+L) (CABS014) at 1:10000 dilution. Lysates/proteins: 25ug per lane. Blocking buffer: 3% nonfat dry milk in TBST. Detection: ECL Basic Kit (CABM00020). Exposure time: 90s.

Western blot analysis of extracts from normal (control) and TAGLN2 knockout (KO) 293T cells, using TAGLN2 antibody (CAB6761) at 1:1000 dilution. Secondary antibody: HRP Goat Anti-Rabbit IgG (H+L) (CABS014) at 1:10000 dilution. Lysates/proteins: 25ug per lane. Blocking buffer: 3% nonfat dry milk in TBST. Detection: ECL Basic Kit (CABM00020). Exposure time: 5s.

Immunofluorescence analysis of MCF7 cells using TAGLN2 antibody (CAB6761). Blue: DAPI for nuclear staining.