

TINF2 Rabbit Polyclonal Antibody



CAB6769

Product Information

Size:

20uL, 50uL, 100uL, 200uL

Observed MW:

40-45kDa

Calculated MW:

15kDa/39kDa/50kDa

Applications:

WB

Reactivity:

Human, Mouse

Protein Background

This gene encodes one of the proteins of the shelterin, or telosome, complex which protects telomeres by allowing the cell to distinguish between telomeres and regions of DNA damage. The protein encoded by this gene is a critical part of shelterin; it interacts with the three DNA-binding proteins of the shelterin complex, and it is important for assembly of the complex. Mutations in this gene cause dyskeratosis congenita (DKC), an inherited bone marrow failure syndrome.

Immunogen information

Gene ID:

26277

Uniprot

Q9BSI4

Synonyms:

TINF2; DKCA3; TIN2

Antibody Information

Recommended dilutions:

WB 1:500 - 1:2000

Source:

Rabbit

Isotype:

IgG

Purification:

Affinity purification

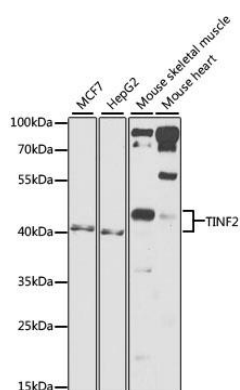
Immunogen:

Recombinant fusion protein containing a sequence corresponding to amino acids 202-451 of human TINF2 (NP_001092744.1).

Storage:

Store at -20°C. Avoid freeze / thaw cycles. Buffer: PBS with 0.02% sodium azide, 50% glycerol, pH7.3.

Product Images



Western blot analysis of extracts of various cell lines, using TINF2 antibody (CAB6769) at 1:1000 dilution. Secondary antibody: HRP Goat Anti-Rabbit IgG (H+L) (CABS014) at 1:10000 dilution. Lysates/proteins: 25ug per lane. Blocking buffer: 3% nonfat dry milk in TBST. Detection: ECL Basic Kit (CABM00020). Exposure time: 90s.