

# TMED10 Rabbit Polyclonal Antibody



CAB6771

## Product Information

### Size:

20uL, 50uL, 100uL, 200uL

### Observed MW:

21kDa

### Calculated MW:

24kDa

### Applications:

WB IHC IF

### Reactivity:

Human, Mouse, Rat

## Antibody Information

### Recommended dilutions:

WB 1:500 - 1:2000 IHC 1:50  
- 1:200 IF 1:50 - 1:200

### Source:

Rabbit

### Isotype:

IgG

### Purification:

Affinity purification

## Protein Background

This gene is a member of the EMP24/GP25L/p24 family and encodes a protein with a GOLD domain. This type I membrane protein is localized to the plasma membrane and golgi cisternae and is involved in vesicular protein trafficking. The protein is also a member of a heteromeric secretase complex and regulates the complex's gamma-secretase activity without affecting its epsilon-secretase activity. Mutations in this gene have been associated with early-onset familial Alzheimer's disease. This gene has a pseudogene on chromosome 8.

## Immunogen information

### Gene ID:

10972

### Uniprot

P49755

### Synonyms:

TMED10; P24(DELTA); S31I125; S31III125; TMP21; Tmp-21-I; p23;  
p24d1

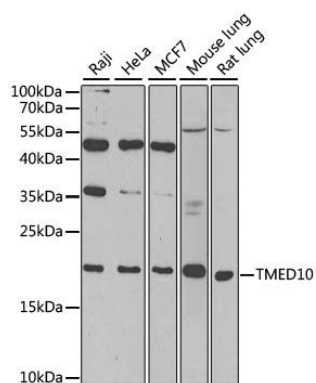
### Immunogen:

Recombinant fusion protein containing a sequence corresponding to amino acids 35-190 of human TMED10 (NP\_006818.3).

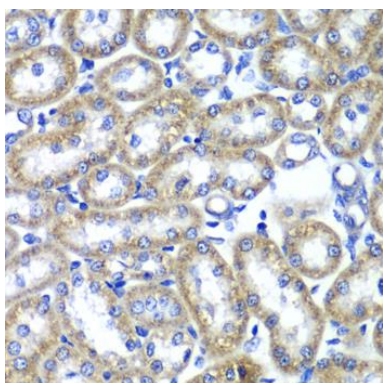
### Storage:

Store at -20°C. Avoid freeze / thaw cycles. Buffer: PBS with 0.02% sodium azide, 50% glycerol, pH7.3.

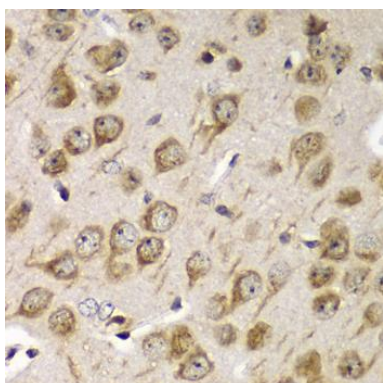
## Product Images



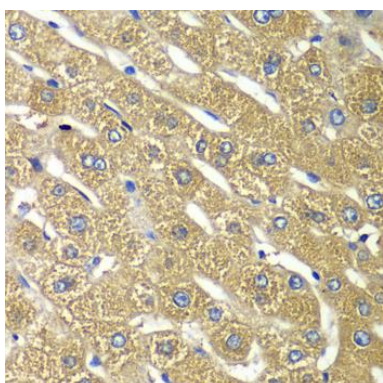
Western blot analysis of extracts of various cell lines, using TMED10 antibody (CAB6771) at 1:1000 dilution. Secondary antibody: HRP Goat Anti-Rabbit IgG (H+L) (CABS014) at 1:10000 dilution. Lysates/proteins: 25ug per lane. Blocking buffer: 3% nonfat dry milk in TBST. Detection: ECL Basic Kit (CABM00020). Exposure time: 90s.



Immunohistochemistry of paraffin-embedded rat kidney using TMED10 Antibody (CAB6771) at dilution of 1:100 (40x lens).



Immunohistochemistry of paraffin-embedded mouse brain using TMED10 Antibody (CAB6771) at dilution of 1:100 (40x lens).



Immunohistochemistry of paraffin-embedded human liver using TMED10 Antibody (CAB6771) at dilution of 1:100 (40x lens).