

TRAF3IP2 Rabbit Polyclonal Antibody



CAB6776

Product Information

Size:

20uL, 50uL, 100uL, 200uL

Observed MW:

70kDa

Calculated MW:

12kDa/18kDa/63kDa/64kDa

Applications:

WB IHC

Reactivity:

Human, Mouse, Rat

Antibody Information

Recommended dilutions:

WB 1:500 - 1:2000 IHC 1:50
- 1:200

Source:

Rabbit

Isotype:

IgG

Purification:

Affinity purification

Protein Background

This gene encodes a protein involved in regulating responses to cytokines by members of the Rel/NF-kappaB transcription factor family. These factors play a central role in innate immunity in response to pathogens, inflammatory signals and stress. This gene product interacts with TRAF proteins (tumor necrosis factor receptor-associated factors) and either I-kappaB kinase or MAP kinase to activate either NF-kappaB or Jun kinase. Several alternative transcripts encoding different isoforms have been identified. Another transcript, which does not encode a protein and is transcribed in the opposite orientation, has been identified. Overexpression of this transcript has been shown to reduce expression of at least one of the protein encoding transcripts, suggesting it has a regulatory role in the expression of this gene.

Immunogen information

Gene ID:

10758

Uniprot

O43734

Synonyms:

TRAF3IP2; ACT1; C6orf2; C6orf4; C6orf5; C6orf6; CANDF8; CIKS;
PSORS13

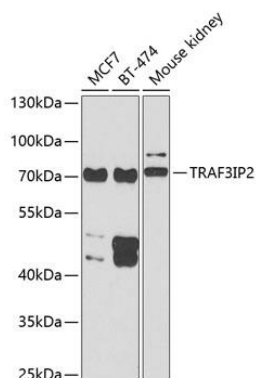
Immunogen:

Recombinant fusion protein containing a sequence corresponding to amino acids 1-300 of human TRAF3IP2 (NP_679211.2).

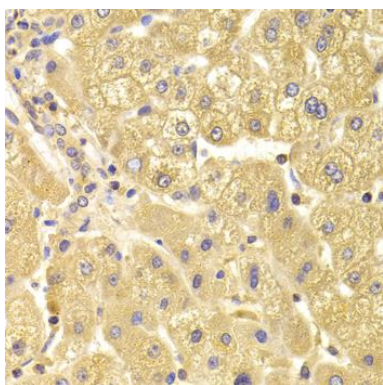
Storage:

Store at -20°C. Avoid freeze / thaw cycles. Buffer: PBS with 0.02% sodium azide, 50% glycerol, pH7.3.

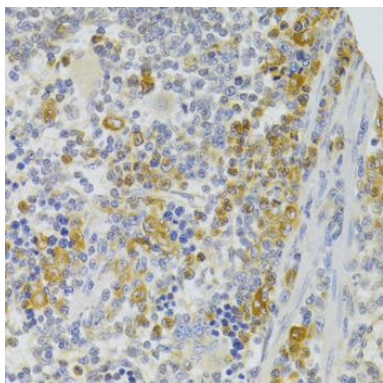
Product Images



Western blot analysis of extracts of various cell lines, using TRAF3IP2 antibody (CAB6776) at 1:1000 dilution. Secondary antibody: HRP Goat Anti-Rabbit IgG (H+L) (CABS014) at 1:10000 dilution. Lysates/proteins: 25ug per lane. Blocking buffer: 3% nonfat dry milk in TBST. Detection: ECL Basic Kit (CABM00020). Exposure time: 90s.



Immunohistochemistry of paraffin-embedded human liver damage using TRAF3IP2 Antibody (CAB6776) at dilution of 1:100 (40x lens).



Immunohistochemistry of paraffin-embedded rat spleen using TRAF3IP2 Antibody (CAB6776) at dilution of 1:100 (40x lens).