

TSC22D3 Rabbit Polyclonal Antibody



CAB6779

Product Information

Size:

20uL, 50uL, 100uL, 200uL

Observed MW:

15kDa

Calculated MW:

13kDa/14kDa/22kDa

Applications:

WB IHC IF IP

Reactivity:

Human, Mouse, Rat

Protein Background

This gene encodes the anti-inflammatory protein glucocorticoid (GC)-induced leucine zipper. Expression of this gene stimulated by glucocorticoids and interleukin 10 and it appears to play a key role in the anti-inflammatory and immunosuppressive effects of this steroid. This protein has also been shown to inhibit pro-inflammatory molecules including nuclear factor κB. Alternate splicing results in multiple transcript variants.

Immunogen information

Gene ID:

1831

Uniprot

Q99576

Synonyms:

TSC22D3; DIP; DSIPI; GILZ; TSC-22R

Antibody Information

Recommended dilutions:

WB 1:500 - 1:2000 IHC 1:50

- 1:200 IF 1:50 - 1:200 IP

1:50 - 1:100

Source:

Rabbit

Isotype:

IgG

Purification:

Affinity purification

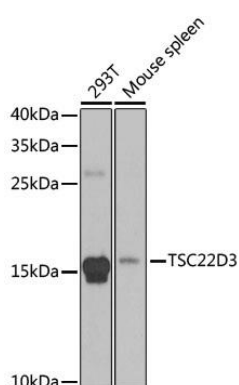
Immunogen:

Recombinant fusion protein containing a sequence corresponding to amino acids 1-79 of human TSC22D3 (NP_001015881.1).

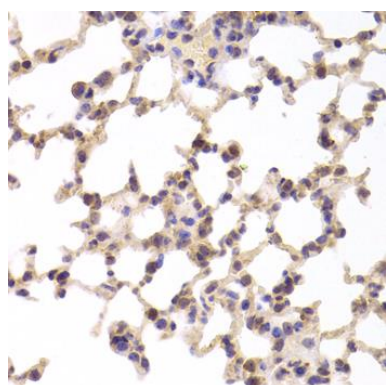
Storage:

Store at -20°C. Avoid freeze / thaw cycles. Buffer: PBS with 0.02% sodium azide, 50% glycerol, pH7.3.

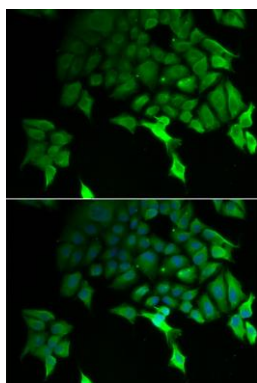
Product Images



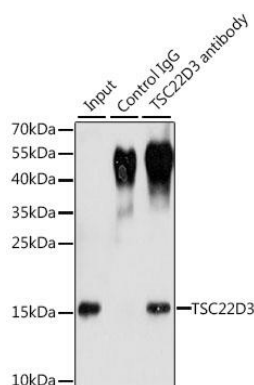
Western blot analysis of extracts of various cell lines, using TSC22D3 antibody (CAB6779) at 1:1000 dilution. Secondary antibody: HRP Goat Anti-Rabbit IgG (H+L) (CABS014) at 1:10000 dilution. Lysates/proteins: 25ug per lane. Blocking buffer: 3% nonfat dry milk in TBST. Detection: ECL Basic Kit (CABM00020). Exposure time: 90s.



Immunohistochemistry of paraffin-embedded mouse lung using TSC22D3 Antibody (CAB6779) at dilution of 1:100 (40x lens).



Immunofluorescence analysis of U2OS cells using TSC22D3 antibody (CAB6779). Blue: DAPI for nuclear staining.



Immunoprecipitation analysis of 200ug extracts of 293T cells, using 3 ug TSC22D3 antibody (CAB6779). Western blot was performed from the immunoprecipitate using TSC22D3 antibody (CAB6779) at a dilution of 1:1000.