

TSHB Rabbit Polyclonal Antibody



CAB6780

Product Information

Size:

20uL, 50uL, 100uL, 200uL

Observed MW:

Refer to Figures

Calculated MW:

10kDa/15kDa

Applications:

WB IHC IF

Reactivity:

Human, Mouse

Antibody Information

Recommended dilutions:

WB 1:500 - 1:2000 IHC 1:50
- 1:100 IF 1:50 - 1:100

Source:

Rabbit

Isotype:

IgG

Purification:

Affinity purification

Protein Background

The four human glycoprotein hormones chorionic gonadotropin (CG), luteinizing hormone (LH), follicle stimulating hormone (FSH), and thyroid stimulating hormone (TSH) are dimers consisting of alpha and beta subunits that are associated noncovalently. The alpha subunits of these hormones are identical, however, their beta chains are unique and confer biological specificity. Thyroid stimulating hormone functions in the control of thyroid structure and metabolism. The protein encoded by this gene is the beta subunit of thyroid stimulating hormone. Mutations in this gene are associated with congenital central and secondary hypothyroidism and Hashimoto's thyroiditis. Alternative splicing of this gene results in multiple transcript variants.

Immunogen information

Gene ID:

7252

Uniprot

P01222

Synonyms:

TSHB; TSH-B; TSH-BETA

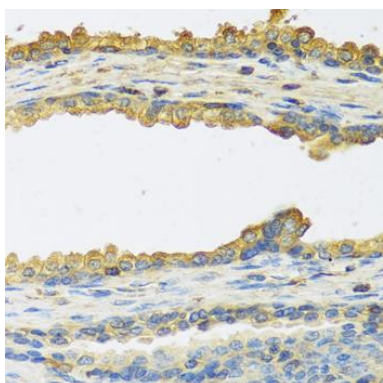
Immunogen:

Recombinant fusion protein containing a sequence corresponding to amino acids 21-138 of human TSHB (NP_000540.2).

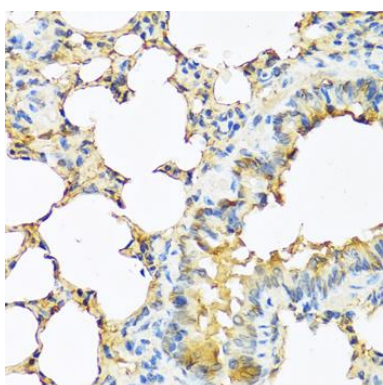
Storage:

Store at -20°C. Avoid freeze / thaw cycles. Buffer: PBS with 0.02% sodium azide, 50% glycerol, pH7.3.

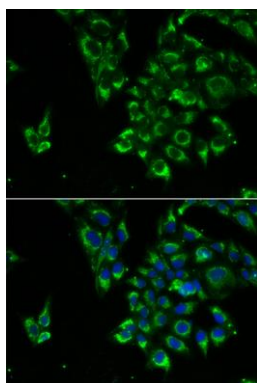
Product Images



Immunohistochemistry of paraffin-embedded human prostate using TSHB antibody (CAB6780) at dilution of 1:100 (40x lens).



Immunohistochemistry of paraffin-embedded mouse lung using TSHB antibody (CAB6780) at dilution of 1:100 (40x lens).



Immunofluorescence analysis of U2OS cells using TSHB antibody (CAB6780). Blue: DAPI for nuclear staining.