

# TXN2 Rabbit Polyclonal Antibody



CAB6782

## Product Information

### Size:

20uL, 50uL, 100uL, 200uL

### Observed MW:

13kDa

### Calculated MW:

18kDa

### Applications:

WB IHC IF

### Reactivity:

Human, Mouse

## Protein Background

This nuclear gene encodes a mitochondrial member of the thioredoxin family, a group of small multifunctional redox-active proteins. The encoded protein may play important roles in the regulation of the mitochondrial membrane potential and in protection against oxidant-induced apoptosis.

## Immunogen information

### Gene ID:

25828

### Uniprot

Q99757

### Synonyms:

TXN2; COXPD29; MT-TRX; MTRX; TRX2; TXN

## Antibody Information

### Recommended dilutions:

WB 1:500 - 1:2000 IHC 1:50  
- 1:200 IF 1:10 - 1:100

### Source:

Rabbit

### Isotype:

IgG

### Purification:

Affinity purification

### Immunogen:

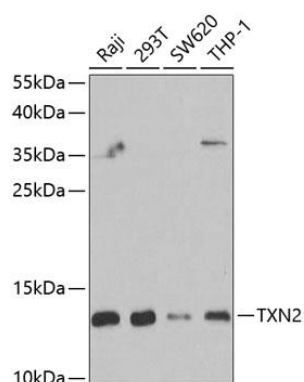
Recombinant fusion protein containing a sequence corresponding to amino acids 1-166 of human TXN2 (NP\_036605.2).

### Storage:

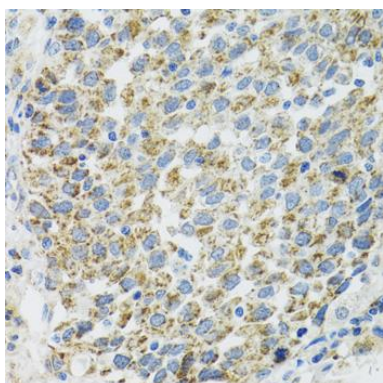
Store at -20°C. Avoid freeze / thaw cycles. Buffer: PBS with 0.02% sodium azide, 50% glycerol, pH7.3.

## Product Images

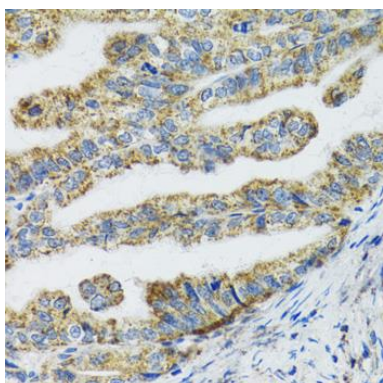
---



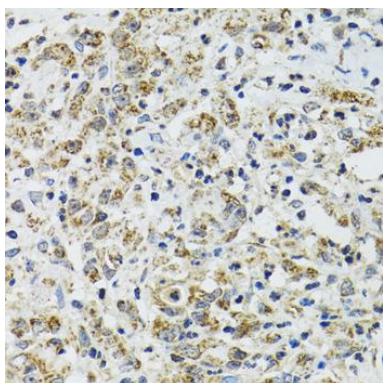
Western blot analysis of extracts of various cell lines, using TXN2 antibody (CAB6782) at 1:1000 dilution. Secondary antibody: HRP Goat Anti-Rabbit IgG (H+L) (CABS014) at 1:10000 dilution. Lysates/proteins: 25ug per lane. Blocking buffer: 3% nonfat dry milk in TBST. Detection: ECL Basic Kit (CABM00020). Exposure time: 30s.



Immunohistochemistry of paraffin-embedded human lung cancer using TXN2 antibody (CAB6782) at dilution of 1:100 (40x lens).



Immunohistochemistry of paraffin-embedded human gastric cancer using TXN2 antibody (CAB6782) at dilution of 1:100 (40x lens).



Immunohistochemistry of paraffin-embedded human uterine cancer using TXN2 antibody (CAB6782) at dilution of 1:100 (40x lens).