

UQCRFS1 Rabbit Polyclonal Antibody



CAB6784

Product Information

Size:

20uL, 50uL, 100uL, 200uL

Observed MW:

24kDa

Calculated MW:

29kDa

Applications:

WB IHC IF

Reactivity:

Human, Mouse, Rat

Antibody Information

Recommended dilutions:

WB 1:500 - 1:2000 IHC 1:50
- 1:200 IF 1:10 - 1:100

Source:

Rabbit

Isotype:

IgG

Purification:

Affinity purification

Protein Background

Immunogen information

Gene ID:

7386

Uniprot

P47985

Synonyms:

UQCRFS1; RIP1; RIS1; RISP; UQCR5

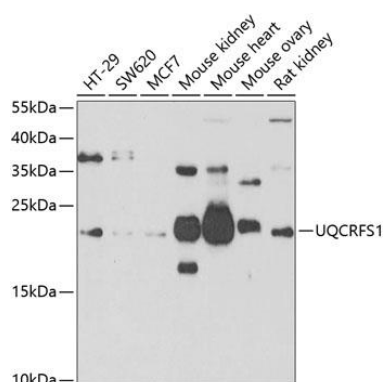
Immunogen:

Recombinant fusion protein containing a sequence corresponding to amino acids 79-274 of human UQCRFS1 (NP_005994.2).

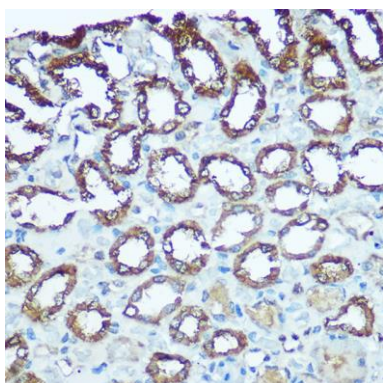
Storage:

Store at -20°C. Avoid freeze / thaw cycles. Buffer: PBS with 0.02% sodium azide, 50% glycerol, pH7.3.

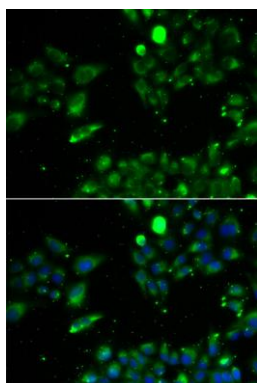
Product Images



Western blot analysis of extracts of various cell lines, using UQCRFS1 antibody (CAB6784) at 1:1000 dilution. Secondary antibody: HRP Goat Anti-Rabbit IgG (H+L) (CABS014) at 1:10000 dilution. Lysates/proteins: 25ug per lane. Blocking buffer: 3% nonfat dry milk in TBST. Detection: ECL Basic Kit (CABM00020). Exposure time: 90s.



Immunohistochemistry of paraffin-embedded rat kidney using UQCRFS1 Rabbit pAb (CAB6784) at dilution of 1:100 (40x lens).



Immunofluorescence analysis of U2OS cells using UQCRFS1 antibody (CAB6784). Blue: DAPI for nuclear staining.