

USP15 Rabbit Polyclonal Antibody



CAB6786

Product Information

Size:

20uL, 50uL, 100uL, 200uL

Observed MW:

112kDa

Calculated MW:

27kDa/109kDa/112kDa

Applications:

WB IF

Reactivity:

Human, Mouse

Protein Background

This gene encodes a member of the ubiquitin specific protease (USP) family of deubiquitinating enzymes. USP enzymes play critical roles in ubiquitin-dependent processes through polyubiquitin chain disassembly and hydrolysis of ubiquitin-substrate bonds. The encoded protein associates with the COP9 signalosome, and also plays a role in transforming growth factor beta signalling through deubiquitination of receptor-activated SMAD transcription factors. Alternatively spliced transcript variants encoding multiple isoforms have been observed for this gene, and a pseudogene of this gene is located on the long arm of chromosome 2.

Immunogen information

Gene ID:

9958

Uniprot

Q9Y4E8

Synonyms:

USP15; UNPH-2; UNPH4

Antibody Information

Recommended dilutions:

WB 1:500 - 1:2000 IF 1:50 - 1:100

Source:

Rabbit

Isotype:

IgG

Purification:

Affinity purification

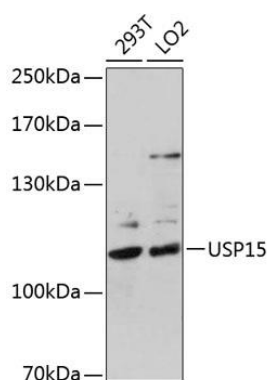
Immunogen:

Recombinant fusion protein containing a sequence corresponding to amino acids 852-952 of human USP15 (NP_006304.1).

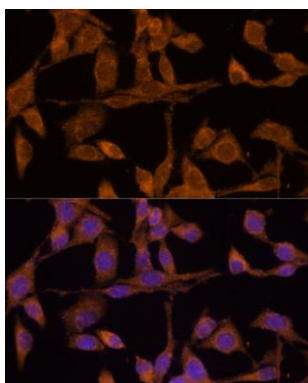
Storage:

Store at -20°C. Avoid freeze / thaw cycles. Buffer: PBS with 0.02% sodium azide, 50% glycerol, pH7.3.

Product Images



Western blot analysis of extracts of various cell lines, using USP15 antibody (CAB6786) at 1:1000 dilution. Secondary antibody: HRP Goat Anti-Rabbit IgG (H+L) (CABS014) at 1:10000 dilution. Lysates/proteins: 25ug per lane. Blocking buffer: 3% nonfat dry milk in TBST. Detection: ECL Basic Kit (CABM00020). Exposure time: 90s.



Immunofluorescence analysis of HeLa cells using USP15 Polyclonal Antibody (CAB6786) at dilution of 1:100 (40x lens). Blue: DAPI for nuclear staining.