

WFDC2 Rabbit Polyclonal Antibody



CAB6788

Product Information

Size:

20uL, 50uL, 100uL, 200uL

Observed MW:

Refer to figures

Calculated MW:

8kDa/11kDa/12kDa

Applications:

IHC

Reactivity:

Human, Mouse, Rat

Protein Background

This gene encodes a protein that is a member of the WFDC domain family. The WFDC domain, or WAP Signature motif, contains eight cysteines forming four disulfide bonds at the core of the protein, and functions as a protease inhibitor in many family members. This gene is expressed in pulmonary epithelial cells, and was also found to be expressed in some ovarian cancers. The encoded protein is a small secretory protein, which may be involved in sperm maturation.

Immunogen information

Gene ID:

10406

Uniprot

Q14508

Synonyms:

WFDC2; EDDM4; HE4; WAP5; dJ461P17.6

Antibody Information

Recommended dilutions:

IHC 1:100 - 1:200

Source:

Rabbit

Isotype:

IgG

Purification:

Affinity purification

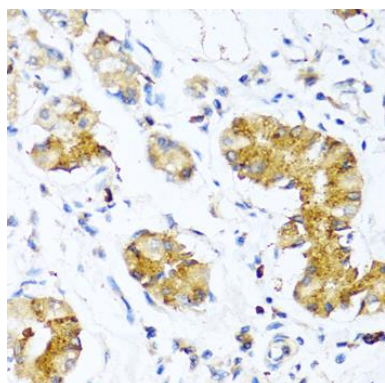
Immunogen:

Recombinant fusion protein containing a sequence corresponding to amino acids 24-124 of human WFDC2 (NP_006094.3).

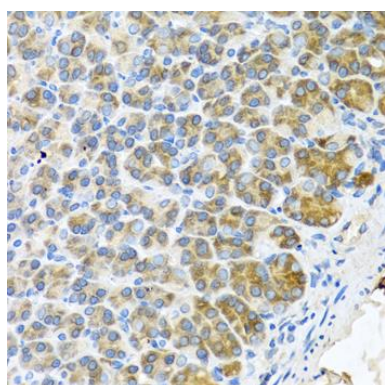
Storage:

Store at -20°C. Avoid freeze / thaw cycles. Buffer: PBS with 0.02% sodium azide, 50% glycerol, pH7.3.

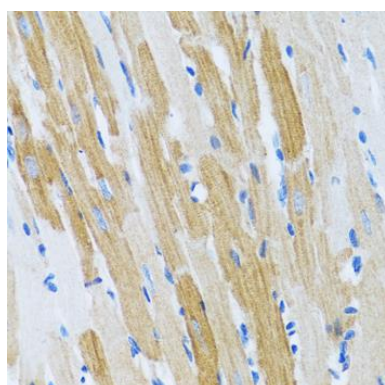
Product Images



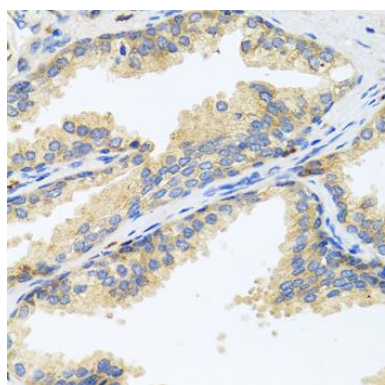
Immunohistochemistry of paraffin-embedded human stomach using WFDC2 antibody (CAB6788) at dilution of 1:100 (40x lens).



Immunohistochemistry of paraffin-embedded mouse stomach using WFDC2 antibody (CAB6788) at dilution of 1:100 (40x lens).



Immunohistochemistry of paraffin-embedded rat heart using WFDC2 antibody (CAB6788) at dilution of 1:100 (40x lens).



Immunohistochemistry of paraffin-embedded human prostate using WFDC2 antibody (CAB6788) at dilution of 1:100 (40x lens).