

XPO5 Rabbit Polyclonal Antibody



CAB6790

Product Information

Size:

20uL, 50uL, 100uL, 200uL

Observed MW:

125kDa

Calculated MW:

136kDa

Applications:

WB IHC IF IP

Reactivity:

Human, Mouse, Rat

Protein Background

This gene encodes a member of the karyopherin family that is required for the transport of small RNAs and double-stranded RNA-binding proteins from the nucleus to the cytoplasm. The encoded protein translocates cargo through the nuclear pore complex in a RanGTP-dependent process.

Immunogen information

Gene ID:

57510

Uniprot

Q9HAV4

Synonyms:

XPO5; exp5

Antibody Information

Recommended dilutions:

WB 1:500 - 1:2000 IHC 1:50

- 1:200 IF 1:50 - 1:100 IP

1:50 - 1:200

Source:

Rabbit

Immunogen:

Recombinant fusion protein containing a sequence corresponding to amino acids 925-1204 of human XPO5 (NP_065801.1).

Storage:

Store at -20°C. Avoid freeze / thaw cycles. Buffer: PBS with 0.02% sodium azide, 50% glycerol, pH7.3.

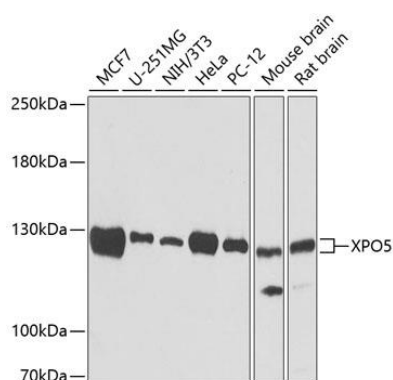
Isotype:

IgG

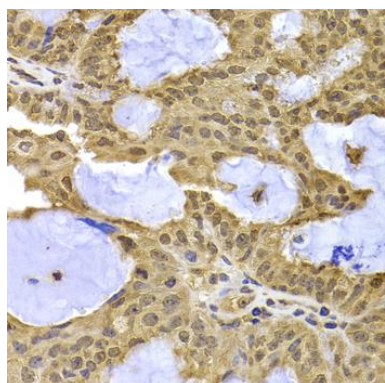
Purification:

Affinity purification

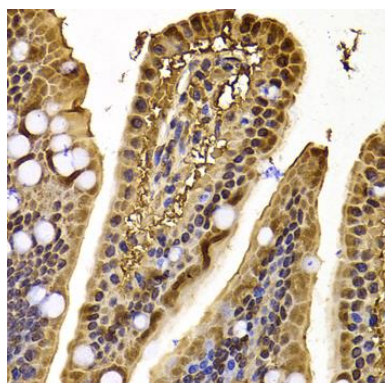
Product Images



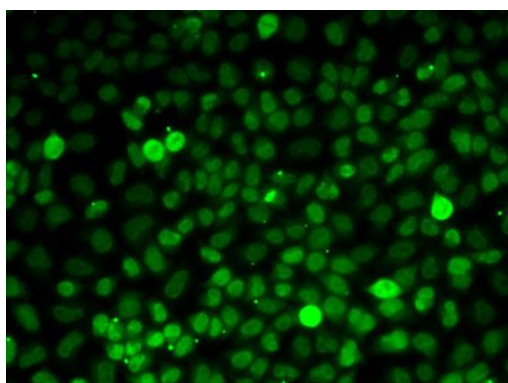
Western blot analysis of extracts of various cell lines, using XPO5 antibody (CAB6790). Secondary antibody: HRP Goat Anti-Rabbit IgG (H+L) (CABS014) at 1:10000 dilution. Lysates/proteins: 25ug per lane. Blocking buffer: 3% nonfat dry milk in TBST. Detection: ECL Basic Kit (CABM00020). Exposure time: 90s.



Immunohistochemistry of paraffin-embedded human oophoroma using XPO5 antibody (CAB6790) at dilution of 1:100 (40x lens).



Immunohistochemistry of paraffin-embedded mouse jejunum using XPO5 antibody (CAB6790) at dilution of 1:100 (40x lens).



Immunofluorescence analysis of MCF7 cells using XPO5 antibody (CAB6790).