

# ZBED1 Rabbit Polyclonal Antibody



CAB6792

## Product Information

### Size:

20uL, 50uL, 100uL, 200uL

### Observed MW:

108kDa

### Calculated MW:

78kDa

### Applications:

WB IHC IF

### Reactivity:

Human

## Protein Background

This gene is located in the pseudoautosomal region 1 (PAR1) of X and Y chromosomes. It was earlier identified as a gene with similarity to Ac transposable elements, however, was found not to have transposase activity. Later studies show that this gene product is localized in the nucleus and functions as a transcription factor. It binds to DNA elements found in the promoter regions of several genes related to cell proliferation, such as histone H1, hence may have a role in regulating genes related to cell proliferation. Alternatively spliced transcript variants with different 5' untranslated region have been found for this gene.

## Immunogen information

### Gene ID:

9189

### Uniprot

O96006

### Synonyms:

ZBED1; ALTE; DREF; TRAMP; hDREF

## Antibody Information

### Recommended dilutions:

WB 1:500 - 1:2000 IHC 1:50  
- 1:200 IF 1:50 - 1:200

### Source:

Rabbit

### Isotype:

IgG

### Purification:

Affinity purification

### Immunogen:

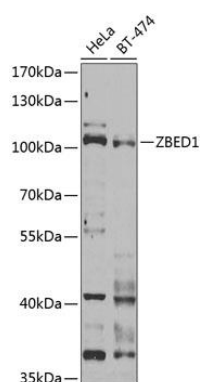
Recombinant fusion protein containing a sequence corresponding to amino acids 1-280 of human ZBED1 (NP\_001164607.1).

### Storage:

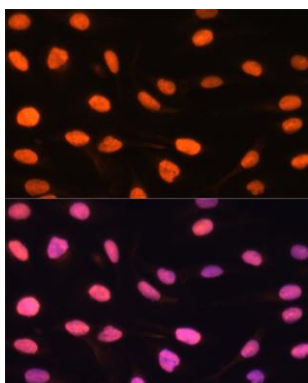
Store at -20°C. Avoid freeze / thaw cycles. Buffer: PBS with 0.02% sodium azide, 50% glycerol, pH7.3.

## Product Images

---



Western blot analysis of extracts of various cell lines, using ZBED1 Antibody (CAB6792) at 1:1000 dilution. Secondary antibody: HRP Goat Anti-Rabbit IgG (H+L) (CABS014) at 1:10000 dilution. Lysates/proteins: 25ug per lane. Blocking buffer: 3% nonfat dry milk in TBST. Detection: ECL Basic Kit (CABM00020). Exposure time: 60s.



Immunofluorescence analysis of U-2 OS cells using ZBED1 antibody (CAB6792) at dilution of 1:100. Blue: DAPI for nuclear staining.