

Bcl9 Rabbit Polyclonal Antibody



CAB6795

Product Information

Size:

20uL, 50uL, 100uL, 200uL

Observed MW:

160kDa/170kDa

Calculated MW:

148kDa

Applications:

WB IHC

Reactivity:

Human, Mouse, Rat

Protein Background

BCL9 is associated with B-cell acute lymphoblastic leukemia. It may be a target of translocation in B-cell malignancies with abnormalities of 1q21. Its function is unknown. The overexpression of BCL9 may be of pathogenic significance in B-cell malignancies.

Immunogen information

Gene ID:

77578

Uniprot

Synonyms:

BCL9; LGS; Bcl9

Antibody Information

Recommended dilutions:

WB 1:500 - 1:2000 IHC 1:50
- 1:200

Source:

Rabbit

Isotype:

IgG

Purification:

Affinity purification

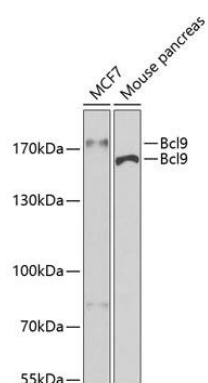
Immunogen:

Recombinant protein of mouse Bcl9

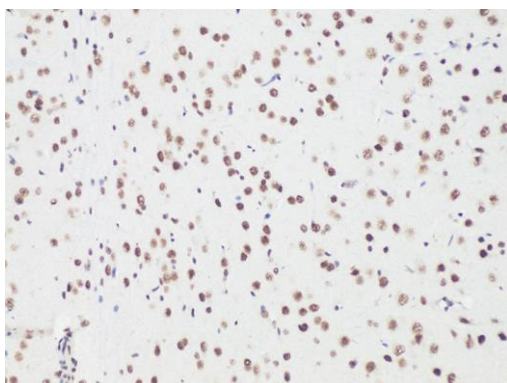
Storage:

Store at -20°C. Avoid freeze / thaw cycles. Buffer: PBS with 0.02% sodium azide, 50% glycerol, pH7.3.

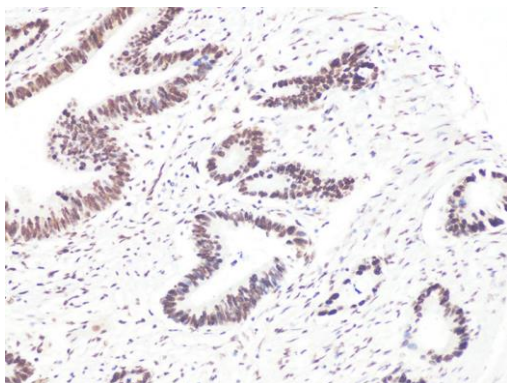
Product Images



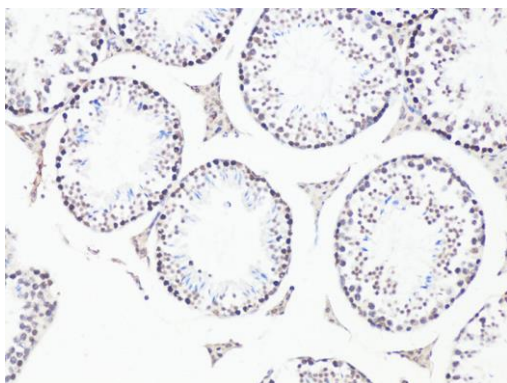
Western blot analysis of extracts of various cell lines, using Bcl9 antibody (CAB6795) at 1:400 dilution. Secondary antibody: HRP Goat Anti-Rabbit IgG (H+L) (CABS014) at 1:10000 dilution. Lysates/proteins: 25ug per lane. Blocking buffer: 3% nonfat dry milk in TBST. Detection: ECL Basic Kit (CABM00020). Exposure time: 30s.



Immunohistochemistry of paraffin-embedded Rat brain using Bcl9 antibody (CAB6795) at dilution of 1:100 (20x lens).



Immunohistochemistry of paraffin-embedded Human colon carcinoma using Bcl9 antibody (CAB6795) at dilution of 1:100 (20x lens).



Immunohistochemistry of paraffin-embedded Mouse testis using Bcl9 antibody (CAB6795) at dilution of 1:100 (20x lens).