

CPT1B Rabbit Polyclonal Antibody



CAB6796

Product Information

Size:

20uL, 50uL, 100uL, 200uL

Observed MW:

110kDa

Calculated MW:

66kDa/78kDa/83kDa/87kDa

Applications:

WB IHC IF

Reactivity:

Human, Mouse, Rat

Protein Background

The protein encoded by this gene, a member of the carnitine/choline acetyltransferase family, is the rate-controlling enzyme of the long-chain fatty acid beta-oxidation pathway in muscle mitochondria. This enzyme is required for the net transport of long-chain fatty acyl-CoAs from the cytoplasm into the mitochondria. Multiple transcript variants encoding different isoforms have been found for this gene, and read-through transcripts are expressed from the upstream locus that include exons from this gene.

Immunogen information

Gene ID:

1375

Uniprot

Q92523

Synonyms:

CPT1B; CPT1-M; CPT1M; CPTI; CPTI-M; M-CPT1; MCCPT1; MCPT1

Antibody Information

Recommended dilutions:

WB 1:500 - 1:2000 IHC 1:50
- 1:200 IF 1:50 - 1:200

Source:

Rabbit

Isotype:

IgG

Purification:

Affinity purification

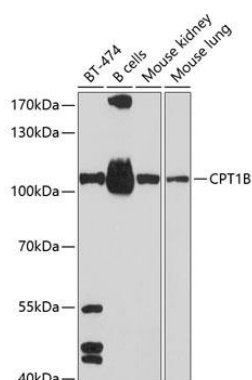
Immunogen:

Recombinant fusion protein containing a sequence corresponding to amino acids 533-772 of human CPT1B (NP_004368.1).

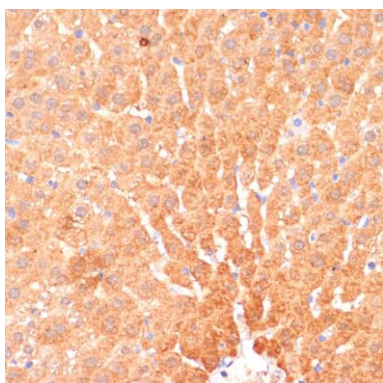
Storage:

Store at -20°C. Avoid freeze / thaw cycles. Buffer: PBS with 0.02% sodium azide, 50% glycerol, pH7.3.

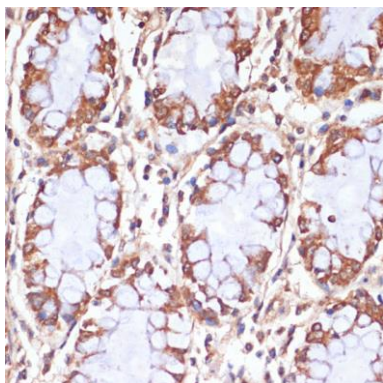
Product Images



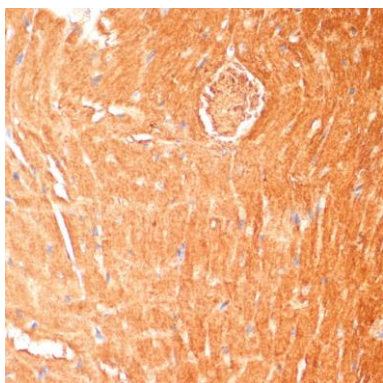
Western blot analysis of extracts of various cell lines, using CPT1B antibody (CAB6796) at 1:1000 dilution. Secondary antibody: HRP Goat Anti-Rabbit IgG (H+L) (CABS014) at 1:10000 dilution. Lysates/proteins: 25ug per lane. Blocking buffer: 3% nonfat dry milk in TBST. Detection: ECL Basic Kit (CABM00020). Exposure time: 60s.



Immunohistochemistry of paraffin-embedded rat liver using CPT1B antibody (CAB6796) at dilution of 1:100 (40x lens).



Immunohistochemistry of paraffin-embedded human colon using CPT1B antibody (CAB6796) at dilution of 1:100 (40x lens).



Immunohistochemistry of paraffin-embedded mouse heart using CPT1B antibody (CAB6796) at dilution of 1:100 (40x lens).