

# Argonaute-2 Rabbit Polyclonal Antibody



CAB6802

## Product Information

### Size:

20uL, 50uL, 100uL, 200uL

### Observed MW:

110kDa

### Calculated MW:

93kDa/97kDa

### Applications:

WB IHC IF

### Reactivity:

Human, Mouse

## Antibody Information

### Recommended dilutions:

WB 1:500 - 1:2000 IHC 1:50  
- 1:100 IF 1:50 - 1:100

### Source:

Rabbit

### Isotype:

IgG

### Purification:

Affinity purification

## Protein Background

This gene encodes a member of the Argonaute family of proteins which play a role in RNA interference. The encoded protein is highly basic, and contains a PAZ domain and a PIWI domain. It may interact with dicer1 and play a role in short-interfering-RNA-mediated gene silencing. Multiple transcript variants encoding different isoforms have been found for this gene.

## Immunogen information

### Gene ID:

27161

### Uniprot

Q9UKV8

### Synonyms:

AGO2; CASC7; EIF2C2; LINC00980; PPD; Q10; protein argonaute-2;  
Argonaute 2; EIF2C2

### Immunogen:

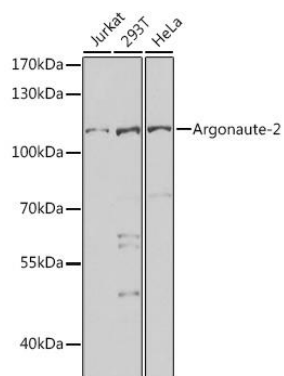
Recombinant fusion protein containing a sequence corresponding to amino acids 47-115 of human Argonaute-2 (NP\_036286.2).

### Storage:

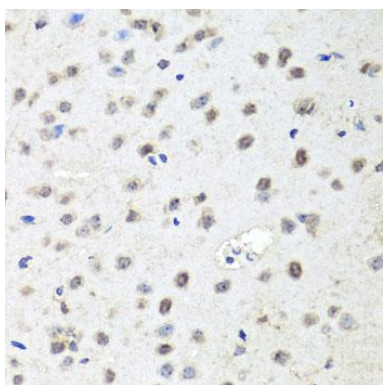
Store at -20°C. Avoid freeze / thaw cycles. Buffer: PBS with 0.02% sodium azide, 50% glycerol, pH7.3.

## Product Images

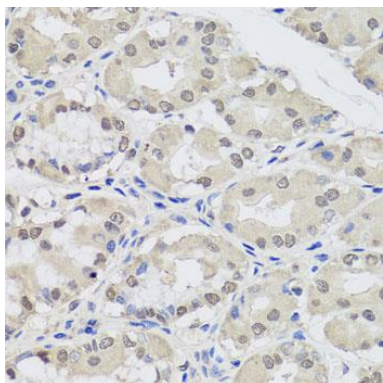
---



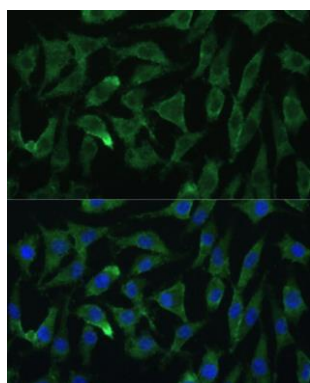
Western blot analysis of extracts of various cell lines, using Argonaute-2 antibody (CAB6802) at 1:1000 dilution. Secondary antibody: HRP Goat Anti-Rabbit IgG (H+L) (CABS014) at 1:10000 dilution. Lysates/proteins: 25ug per lane. Blocking buffer: 3% nonfat dry milk in TBST. Detection: ECL Basic Kit (CABM00020). Exposure time: 20s.



Immunohistochemistry of paraffin-embedded mouse brain using Argonaute-2 antibody (CAB6802) at dilution of 1:100 (40x lens).



Immunohistochemistry of paraffin-embedded human stomach using Argonaute-2 antibody (CAB6802) at dilution of 1:100 (40x lens).



Immunofluorescence analysis of L929 cells using Argonaute-2 Polyclonal Antibody (CAB6802) at dilution of 1:100 (40x lens). Blue: DAPI for nuclear staining.