

# BRIP1 Rabbit Polyclonal Antibody



CAB6804

## Product Information

### Size:

20uL, 50uL, 100uL, 200uL

### Observed MW:

145kDa

### Calculated MW:

112kDa/140kDa

### Applications:

WB

### Reactivity:

Human

## Protein Background

The protein encoded by this gene is a member of the RecQ DEAH helicase family and interacts with the BRCT repeats of breast cancer, type 1 (BRCA1). The bound complex is important in the normal double-strand break repair function of breast cancer, type 1 (BRCA1). This gene may be a target of germline cancer-inducing mutations.

## Immunogen information

### Gene ID:

83990

### Uniprot

Q9BX63

### Synonyms:

BRIP1; BACH1; FANCI; OF

## Antibody Information

### Recommended dilutions:

WB 1:500 - 1:2000

### Source:

Rabbit

### Isotype:

IgG

### Purification:

Affinity purification

### Immunogen:

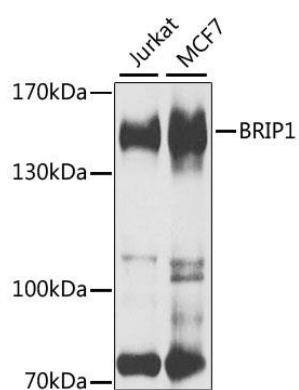
Recombinant fusion protein containing a sequence corresponding to amino acids 1-260 of human BRIP1 (NP\_114432.2).

### Storage:

Store at -20°C. Avoid freeze / thaw cycles. Buffer: PBS with 0.02% sodium azide, 50% glycerol, pH7.3.

## Product Images

---



Western blot analysis of extracts of various cell lines, using BRIP1 antibody (CAB6804) at 1:1000 dilution. Secondary antibody: HRP Goat Anti-Rabbit IgG (H+L) (CABS014) at 1:10000 dilution. Lysates/proteins: 25ug per lane. Blocking buffer: 3% nonfat dry milk in TBST. Detection: ECL Basic Kit (CABM00020). Exposure time: 30s.