

PHOX2B Rabbit Monoclonal Antibody



CAB6816

Product Information

Size:

20uL, 50uL, 100uL, 200uL

Observed MW:

35KDa

Calculated MW:

35kDa

Applications:

WB

Reactivity:

Human, Mouse

Antibody Information

Recommended dilutions:

WB 1:500 - 1:2000

Source:

Rabbit

Isotype:

IgG

Purification:

Affinity purification

Protein Background

The DNA-associated protein encoded by this gene is a member of the paired family of homeobox proteins localized to the nucleus. The protein functions as a transcription factor involved in the development of several major noradrenergic neuron populations and the determination of neurotransmitter phenotype. The gene product is linked to enhancement of second messenger-mediated activation of the dopamine beta-hydroxylase, c-fos promoters and several enhancers, including cyclic amp-response element and serum-response element. Expansion of a 20 amino acid polyalanine tract in this protein by 5-13 aa has been associated with congenital central hypoventilation syndrome. [provided by RefSeq, Jul 2016]

Immunogen information

Gene ID:

8929

Uniprot

Q99453

Synonyms:

NBLST2; NBPhox; PMX2B

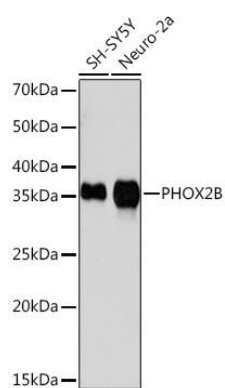
Immunogen:

A synthesized peptide derived from human PHOX2B

Storage:

Store at -20°C. Avoid freeze / thaw cycles. Buffer: PBS with 0.02% sodium azide, 0.05% BSA, 50% glycerol, pH7.3.

Product Images



Western blot - PHOX2B Rabbit mAb (CAB6816)