

# DCP1A Rabbit Monoclonal Antibody



CAB6824

## Product Information

### Size:

20uL, 50uL, 100uL, 200uL

### Observed MW:

73KDa

### Calculated MW:

75kDa

### Applications:

WB IHC IF

### Reactivity:

Human, Mouse

## Protein Background

Decapping is a key step in general and regulated mRNA decay. The protein encoded by this gene is a decapping enzyme. This protein and another decapping enzyme form a decapping complex, which interacts with the nonsense-mediated decay factor hUpf1 and may be recruited to mRNAs containing premature termination codons. This protein also participates in the TGF-beta signaling pathway. Alternative splicing of this gene results in multiple transcript variants. [provided by RefSeq, Feb 2014]

## Immunogen information

### Gene ID:

55802

### Uniprot

Q9NPI6

### Synonyms:

HSA275986; Nbla00360; SMAD4IP1; SMIF

## Antibody Information

### Recommended dilutions:

WB 1:500 - 1:2000 IHC 1:50  
- 1:200 IF 1:50 - 1:200

### Source:

Rabbit

### Isotype:

IgG

### Purification:

Affinity purification

### Immunogen:

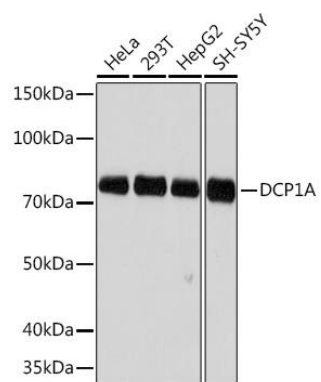
A synthesized peptide derived from human DCP1A

### Storage:

Store at -20°C. Avoid freeze / thaw cycles. Buffer: PBS with 0.02% sodium azide, 0.05% BSA, 50% glycerol, pH7.3.

## Product Images

---



Western blot - DCP1A Rabbit mAb (CAB6824)