

# POLR2L Rabbit Polyclonal Antibody



CAB6839

## Product Information

### Size:

20uL, 50uL, 100uL, 200uL

### Observed MW:

### Calculated MW:

7kDa

### Applications:

IF

### Reactivity:

Human

## Antibody Information

### Recommended dilutions:

IF 1:50 - 1:200

### Source:

Rabbit

### Isotype:

IgG

### Purification:

Affinity purification

## Protein Background

This gene encodes a subunit of RNA polymerase II, the polymerase responsible for synthesizing messenger RNA in eukaryotes. The product of this gene contains four conserved cysteines characteristic of an atypical zinc-binding domain. Like its counterpart in yeast, this subunit may be shared by the other two DNA-directed RNA polymerases.

## Immunogen information

### Gene ID:

5441

### Uniprot

P62875

### Synonyms:

POLR2L; RBP10; RPABC5; RPB10; RPB10beta; RPB7.6; hRPB7.6

### Immunogen:

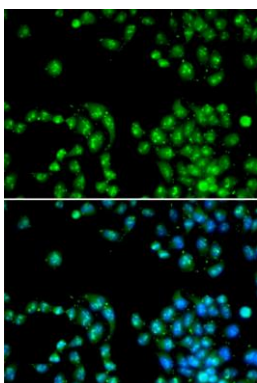
Recombinant fusion protein containing a sequence corresponding to amino acids 1-67 of human POLR2L (NP\_066951.1).

### Storage:

Store at -20°C. Avoid freeze / thaw cycles. Buffer: PBS with 0.02% sodium azide, 50% glycerol, pH7.3.

## Product Images

---



Immunofluorescence analysis of HeLa cells using POLR2L antibody (CAB6839). Blue: DAPI for nuclear staining.