

RAD1 Rabbit Polyclonal Antibody



CAB6841

Product Information

Size:

20uL, 50uL, 100uL, 200uL

Observed MW:

Calculated MW:

7kDa/27kDa/31kDa

Applications:

IHC IF

Reactivity:

Human, Mouse, Rat

Antibody Information

Recommended dilutions:

IHC 1:20 - 1:200 IF 1:50 - 1:200

Source:

Rabbit

Isotype:

IgG

Purification:

Affinity purification

Protein Background

This gene encodes a component of a heterotrimeric cell cycle checkpoint complex, known as the 9-1-1 complex, that is activated to stop cell cycle progression in response to DNA damage or incomplete DNA replication. The 9-1-1 complex is recruited by RAD17 to affected sites where it may attract specialized DNA polymerases and other DNA repair effectors. Alternatively spliced transcript variants of this gene have been described.

Immunogen information

Gene ID:

5810

Uniprot

O60671

Synonyms:

RAD1; HRAD1; REC1

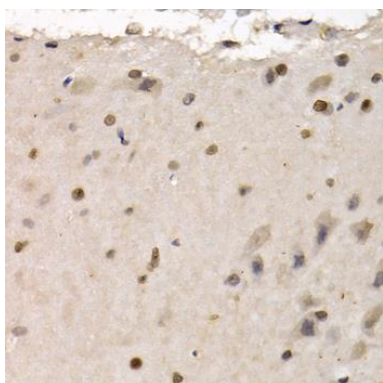
Immunogen:

Recombinant fusion protein containing a sequence corresponding to amino acids 1-282 of human RAD1 (NP_002844.1).

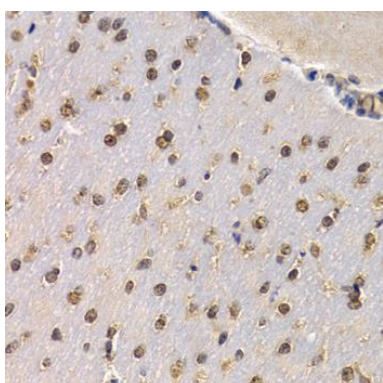
Storage:

Store at -20°C. Avoid freeze / thaw cycles. Buffer: PBS with 0.02% sodium azide, 50% glycerol, pH7.3.

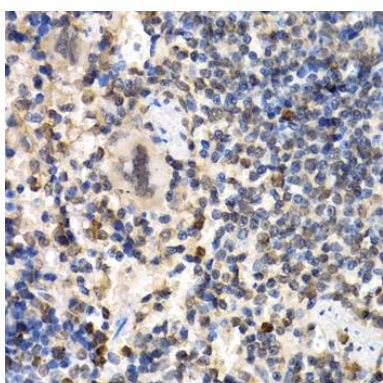
Product Images



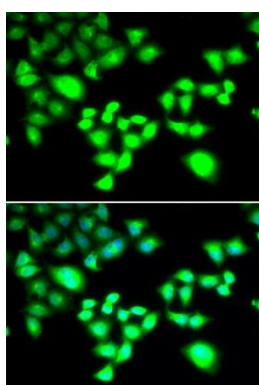
Immunohistochemistry of paraffin-embedded rat brain using RAD1 antibody (CAB6841) at dilution of 1:200 (40x lens).



Immunohistochemistry of paraffin-embedded mouse brain using RAD1 antibody (CAB6841) at dilution of 1:200 (40x lens).



Immunohistochemistry of paraffin-embedded mouse spleen using RAD1 antibody (CAB6841) at dilution of 1:200 (40x lens).



Immunofluorescence analysis of MCF-7 cells using RAD1 antibody (CAB6841). Blue: DAPI for nuclear staining.