

CDKN1C/p57 Kip2 Rabbit Monoclonal Antibody



CAB6843

Product Information

Size:

20uL, 50uL, 100uL, 200uL

Observed MW:

50KDa

Calculated MW:

57kDa

Applications:

WB

Reactivity:

Human, Mouse, Rat

Protein Background

This gene is imprinted, with preferential expression of the maternal allele. The encoded protein is a tight-binding, strong inhibitor of several G1 cyclin/Cdk complexes and a negative regulator of cell proliferation. Mutations in this gene are implicated in sporadic cancers and Beckwith-Wiedemann syndrome, suggesting that this gene is a tumor suppressor candidate. Three transcript variants encoding two different isoforms have been found for this gene. [provided by RefSeq, Oct 2010]

Immunogen information

Gene ID:

1028

Uniprot

P49918

Synonyms:

BWCR; BWS; KIP2; WBS; p57; p57Kip2

Antibody Information

Recommended dilutions:

WB 1:500 - 1:2000

Source:

Rabbit

Isotype:

IgG

Purification:

Affinity purification

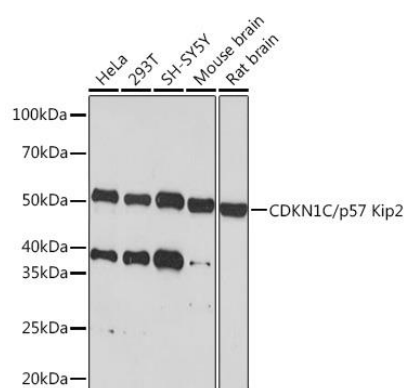
Immunogen:

A synthesized peptide derived from human CDKN1C/p57 Kip2

Storage:

Store at -20°C. Avoid freeze / thaw cycles. Buffer: PBS with 0.02% sodium azide, 0.05% BSA, 50% glycerol, pH7.3.

Product Images



Western blot - CDKN1C/p57 Kip2 Rabbit mAb (CAB6843)