

# UBE2T Rabbit Polyclonal Antibody



CAB6853

---

## Product Information

### Size:

20uL, 50uL, 100uL, 200uL

### Observed MW:

23kDa

### Calculated MW:

22kDa

### Applications:

WB

### Reactivity:

Human, Mouse, Rat

## Protein Background

The protein encoded by this gene catalyzes the covalent attachment of ubiquitin to protein substrates. Defects in this gene have been associated with Fanconi anemia of complementation group T. Two transcript variants encoding different isoforms have been found for this gene.

## Immunogen information

### Gene ID:

29089

### Uniprot

Q9NPD8

### Synonyms:

UBE2T; FANCT; HSPC150; PIG50

## Antibody Information

### Recommended dilutions:

WB 1:200 - 1:2000

### Source:

Rabbit

### Isotype:

IgG

### Purification:

Affinity purification

### Immunogen:

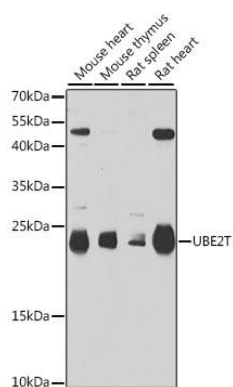
Recombinant fusion protein containing a sequence corresponding to amino acids 1-197 of human UBE2T (NP\_054895.1).

### Storage:

Store at -20°C. Avoid freeze / thaw cycles. Buffer: PBS with 0.02% sodium azide, 50% glycerol, pH7.3.

## Product Images

---



Western blot analysis of extracts of various cell lines, using UBE2T antibody (CAB6853) at 1:1000 dilution. Secondary antibody: HRP Goat Anti-Rabbit IgG (H+L) (CABS014) at 1:10000 dilution. Lysates/proteins: 25ug per lane. Blocking buffer: 3% nonfat dry milk in TBST. Detection: ECL Basic Kit (CABM00020). Exposure time: 90s.