

WDR48 Rabbit Polyclonal Antibody



CAB6854

Product Information

Size:

20uL, 50uL, 100uL, 200uL

Observed MW:

76kDa

Calculated MW:

13kDa/45kDa/66kDa/75kDa/
76kDa

Applications:

WB IHC

Reactivity:

Human, Mouse, Rat

Antibody Information

Recommended dilutions:

WB 1:500 - 1:2000 IHC 1:50
- 1:100

Source:

Rabbit

Isotype:

IgG

Purification:

Affinity purification

Protein Background

The protein encoded by this gene has been shown to interact with ubiquitin specific peptidase 1 (USP1), activating the deubiquitinating activity of USP1 and allowing it to remove the ubiquitin moiety from monoubiquitinated FANCD2. FANCD2 is ubiquitinated in response to DNA damage.

Immunogen information

Gene ID:

57599

Uniprot

Q8TAF3

Synonyms:

WDR48; P80; SPG60; UAF1

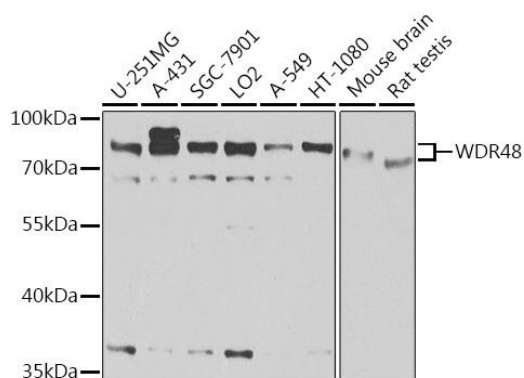
Immunogen:

Recombinant fusion protein containing a sequence corresponding to amino acids 450-677 of human WDR48 (NP_065890.1).

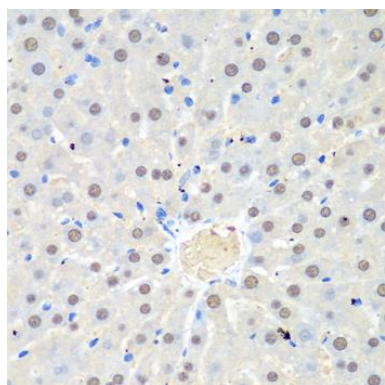
Storage:

Store at -20°C. Avoid freeze / thaw cycles. Buffer: PBS with 0.02% sodium azide, 50% glycerol, pH7.3.

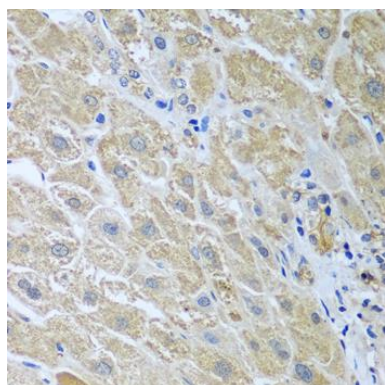
Product Images



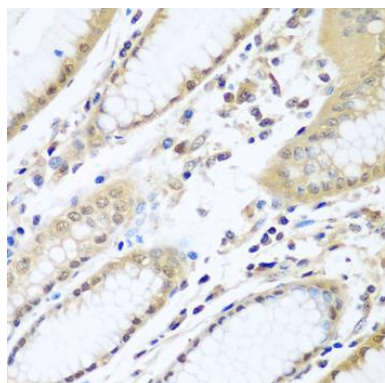
Western blot analysis of extracts of various cell lines, using WDR48 antibody (CAB6854) at 1:1000 dilution. Secondary antibody: HRP Goat Anti-Rabbit IgG (H+L) (CABS014) at 1:10000 dilution. Lysates/proteins: 25ug per lane. Blocking buffer: 3% nonfat dry milk in TBST. Detection: ECL Basic Kit (CABM00020). Exposure time: 15s.



Immunohistochemistry of paraffin-embedded rat liver using WDR48 antibody (CAB6854) at dilution of 1:100 (40x lens).



Immunohistochemistry of paraffin-embedded human liver using WDR48 antibody (CAB6854) at dilution of 1:100 (40x lens).



Immunohistochemistry of paraffin-embedded human stomach using WDR48 antibody (CAB6854) at dilution of 1:100 (40x lens).