

# ABCA3 Rabbit Polyclonal Antibody



CAB6862

## Product Information

### Size:

20uL, 50uL, 100uL, 200uL

### Observed MW:

191kDa

### Calculated MW:

24kDa/191kDa

### Applications:

WB IF

### Reactivity:

Human, Rat

## Antibody Information

### Recommended dilutions:

WB 1:500 - 1:2000 IF 1:50 - 1:100

### Source:

Rabbit

### Isotype:

IgG

### Purification:

Affinity purification

## Protein Background

The membrane-associated protein encoded by this gene is a member of the superfamily of ATP-binding cassette (ABC) transporters. ABC proteins transport various molecules across extra- and intracellular membranes. ABC genes are divided into seven distinct subfamilies (ABC1, MDR/TAP, MRP, ALD, OABP, GCN20, White). This protein is a member of the ABC1 subfamily. Members of the ABC1 subfamily comprise the only major ABC subfamily found exclusively in multicellular eukaryotes. The full transporter encoded by this gene may be involved in development of resistance to xenobiotics and engulfment during programmed cell death.

## Immunogen information

### Gene ID:

21

### Uniprot

Q99758

### Synonyms:

ABCA3; ABC-C; ABC3; EST111653; LBM180; SMDP3

### Immunogen:

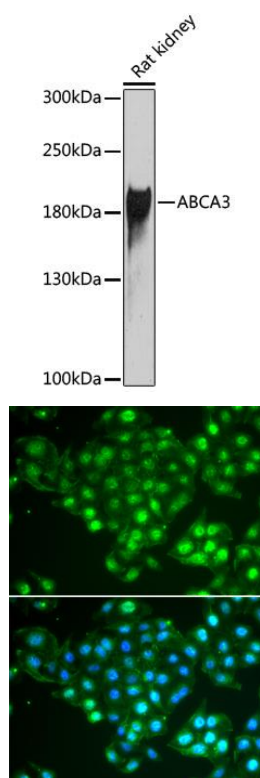
Recombinant fusion protein containing a sequence corresponding to amino acids 43-203 of human ABCA3 (NP\_001080.2).

### Storage:

Store at -20°C. Avoid freeze / thaw cycles. Buffer: PBS with 0.02% sodium azide, 50% glycerol, pH7.3.

## Product Images

---



Western blot analysis of extracts of rat kidney, using ABCA3 antibody (CAB6862) at 1:1000 dilution. Secondary antibody: HRP Goat Anti-Rabbit IgG (H+L) (CABS014) at 1:10000 dilution. Lysates/proteins: 25ug per lane. Blocking buffer: 3% nonfat dry milk in TBST. Detection: ECL Basic Kit (CABM00020). Exposure time: 90s.

Immunofluorescence analysis of HeLa cells using ABCA3 antibody (CAB6862). Blue: DAPI for nuclear staining.