

ALOX15 Rabbit Polyclonal Antibody



CAB6864

Product Information

Size:

20uL, 50uL, 100uL, 200uL

Observed MW:

65kDa

Calculated MW:

70kDa/74kDa

Applications:

WB IHC

Reactivity:

Human, Mouse, Rat

Antibody Information

Recommended dilutions:

WB 1:500 - 1:2000 IHC 1:50
- 1:200

Source:

Rabbit

Isotype:

IgG

Purification:

Affinity purification

Protein Background

Immunogen information

Gene ID:

246

Uniprot

P16050

Synonyms:

ALOX15; 12-LOX; 15-LOX-1; 15LOX-1

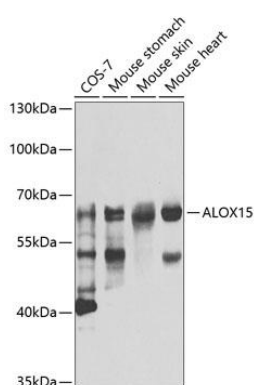
Immunogen:

Recombinant fusion protein containing a sequence corresponding to amino acids 1-230 of human ALOX15 (NP_001131.3).

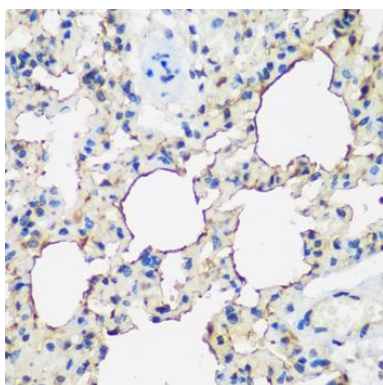
Storage:

Store at -20°C. Avoid freeze / thaw cycles. Buffer: PBS with 0.02% sodium azide, 50% glycerol, pH7.3.

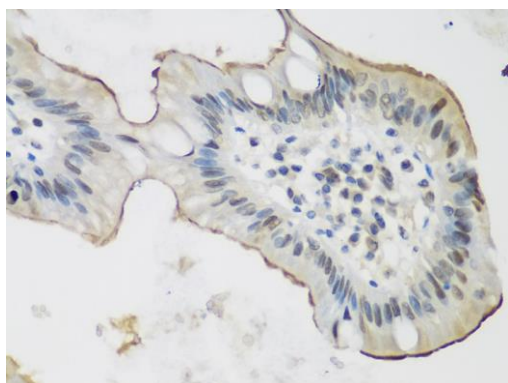
Product Images



Western blot analysis of extracts of various cell lines, using ALOX15 antibody (CAB6864) at 1:1000 dilution. Secondary antibody: HRP Goat Anti-Rabbit IgG (H+L) (CABS014) at 1:10000 dilution. Lysates/proteins: 25ug per lane. Blocking buffer: 3% nonfat dry milk in TBST.



Immunohistochemistry of paraffin-embedded rat lung using ALOX15 antibody (CAB6864) at dilution of 1:200 (40x lens).



Immunohistochemistry of paraffin-embedded human stomach cancer using ALOX15 antibody (CAB6864) at dilution of 1:200 (40x lens).